

# NASA X-38

1/72 scale resin model by Muroc Models™

Castings done by Obscureco Aircraft, WKF

Tony Landis and Matt Graham were of great help in producing this kit.

Instructions

Parts list: Fuselage, Nose skid, Main skids (L & R), Forward main struts(2), Styrene strip for Inner main struts (2), pilot chute, metal rod for gear struts, decals.

General Instructions: Clean all resin parts in soap and water. Use cyanoacrylate or epoxy adhesives on resin. Small parts may be painted before removing them.

## Constructing the X-38

1. Clean any mold marks on the fuselage. If model is to be built with the gear retracted, glue the nose skid and the four main struts in place. Paint the aircraft and apply decals. For gear up, paint the main skids and glue in place.
2. Gear down option. Cut a nose strut (9.5 millimeters) and two main struts (each 11 millimeters) from the metal rod. The holes in the fuselage for the nose and main gear struts can be deepened slightly with a drill. After painting all the landing gear parts, these struts can be glued to the bottom of the fuselage. Epoxy will allow time to orientate the remaining pieces of the gear. Glue the small notch on the interior of tip of the nose skid to nose strut. Glue the other end in place in the nose gear well. Glue the left and right main skids to their respective struts. The notches on the side face inward. Glue the four main struts in place.
3. Glue the painted pilot chute into its opening on the rear surface. The parachute risers can be made from thin strips of tape or foil. Glue the risers into the four channels on the upper surface. In the back, the two rear risers attach to the pilot chute. The two forward riser attachment wells were faired over with metallized tape on the first flights. This can be replicated with metal foil.

## Painting Notes

Gloss White Overall

Black on lower surface and nose

Aluminum-Main skids, gear struts, attachment points

Fiberglass tan-interior of gear wells, interior of nose skid, interior of pilot chute opening

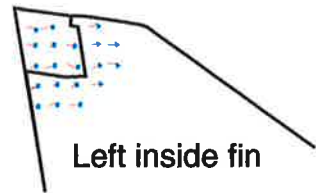
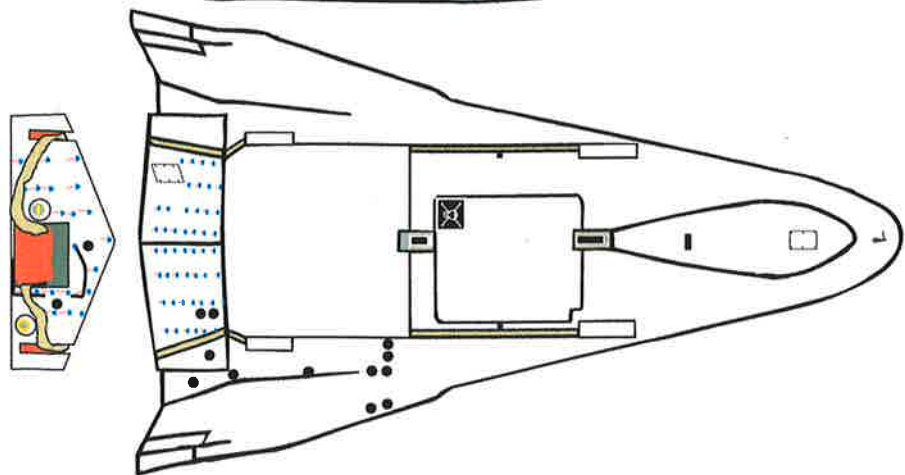
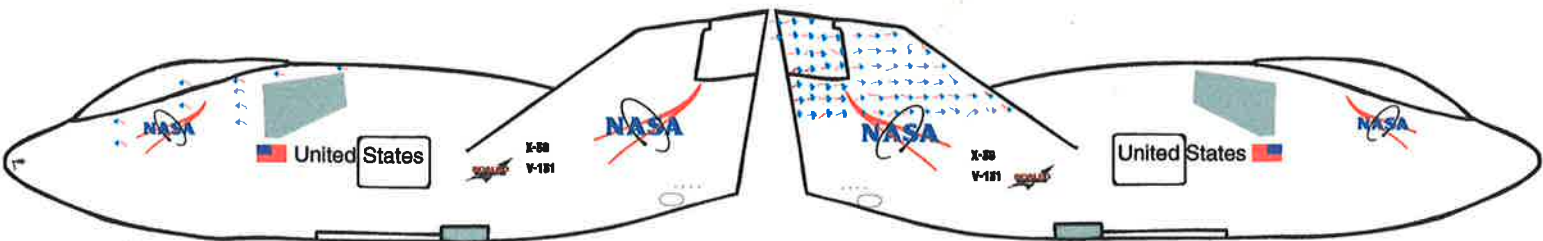
Orange-pilot chute

brass-mortar caps

## References:

NASA/Dryden web site- <http://www.dfrc.nasa.gov/gallery/photo/index.html>  
or try-

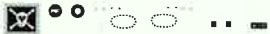
<http://spacelink.msfc.nasa.gov/NASA.Projects/Aeronautics.and.Space.Transportation.Technology/Revolutionary.Technology/Next.Generation.and.Experimental.Aircraft/X-38.Crew.Return.Vehicle/index.html>



Left inside fin

Right inside fin

angle of attack



United States

United States



X-38  
Y-151

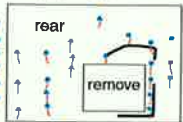


X-38  
Y-151

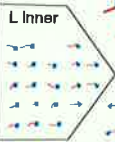
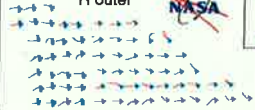
extra



upper wedge



R outer



R inner

