



Junkers Ju 88 C-6 Z/N Nightfighter

04856-0389

© 2013 BY REVELL GmbH. A subsidiary of Hobbico, Inc.

PRINTED IN GERMANY



Junkers Ju 88 C-6 Z/N Nightfighter

Was der Eurofighter, die Rafale und die F-22 in unseren Tagen als MRCA - Mehrzweckkampflugzeug - repräsentieren war in den Zeiten des 2. Weltkrieges die Junkers Ju 88. Sie diente als Sturzkampfbomber und für den Bombeneinsatz aus größeren Höhen, sie war als Jagdflugzeug in der Nachtjagd ebenso erfolgreich wie als Torpedobomber gegen Schiffsziele. Sie konnte als Jäger gegen Panzer und zur Eisenbahnjagd eingesetzt werden, sie war Minenleger und Aufklärer. Und in ihren letzten Tagen war sie im Mistelgespann der Bombenträger unter der Bf 109 oder Fw 190. Als der 2. Weltkrieg endete stand die Ju 88 noch immer in voller Produktion und bis zu diesem Zeitpunkt waren mehr Ju 88 gebaut worden als alle anderen Bomber der Luftwaffe zusammen genommen - über 15 000 Maschinen.

Geplant und gebaut als Schnellbomber stellte die Ju 88 bereits im März 1938 mit 517 km/h den ersten Weltrekord über die 1000km-Strecke auf - eine Geschwindigkeit die selbst von den damaligen Jagdflugzeugen nicht erreicht wurde. Von Anfang an umfasste die Spezifikation des RLM (Reichsluftfahrt Ministerium) für die Ju 88 auch den Einsatz als Tag-Zerstörer und schwerer Nachtjäger. Der erste Prototyp für die Zerstörerversion war die Ju 88 Z-15 und Z-19, die eine Bugbewaffnung unter Beibehaltung der verglasten Rumpfspitze vorsahen. Das erste Serienmuster war die Ju 88C-2 (auf der Basis der Ju 88A-1) mit einem Metallbug zur Aufnahme von vier Kanonen. Auf die Bombenrüstung wurde nur teilweise verzichtet. Als erste Einheit erhielt das KG 30 das während des Einsatzes in Norwegen die erste Zerstörerstaffel gebildet hatte, die neuen Flugzeuge. Mit einer Reichweite von über 2500 km und ausgezeichneten Flugeigenschaften war sie auch das ideale Flugzeug für die von General Kammhuber neu aufgestellte Nachtjagd. Als erste Einheit erhielt die II/NJG 2 in Gilze-Rijen, Holland die neue Maschine für ihre erfolgreichen Fernjagdeinsätze über den britischen Bomberbasen. Die folgende Serie, Ju 88C-4, basierte auf der Ju 88A-5, die im Gegensatz zur A-1 neben einer verlängerten Tragfläche auch über stärkere Triebwerke verfügte. Der ultimative Ju 88-Zerstörer/Nachtjäger, der auch in den größten Stückzahlen gebaut wurde, war jedoch die Ju 88C-6 (auf der Basis der Ju 88A-4) die weitgehend in den Nachtjagdverbänden zum Einsatz kam. Bereits Ende 1942 erhielten die Ju 88C-6 mit dem FuG 202 Lichtenstein BC als erste Maschinen ein Bordradar. Mit dem verbesserten FuG 212 Lichtenstein C-1 stand schließlich ein Bordradar in größeren Stückzahlen zur Verfügung. Die Ju 88C war damit zum wichtigsten Nachtjagdflugzeug der Luftwaffe geworden, das auch auf allen Kriegsschauplätzen vom Nordmeer bis nach Afrika zum Einsatz kam. Daneben wurde die Ju 88C aber auch weiter als Zerstörer für Einsätze gegen Schiffe im Nord- und Mittelmeer, sowie besonders auf den östlichen Kriegsschauplätzen, in der Eisenbahnjagd eingesetzt. Ende 1944 wurde die Produktion der Ju 88C nach 3964 gebauten Maschinen eingestellt.

Technische Daten:

Spannweite	20,08 m
Länge	14,36 m
Höhe	5,07 m
Triebwerke	2x Junkers Jumo 211 J
Leistung	1 410 PS
Leergewicht	8 100 kg
Startgewicht max.	12 460 kg
Höchstgeschwindigkeit	510 km/h
Reisegeschwindigkeit	490 km/h
Landegeschwindigkeit	145 km/h
Reichweite normal	2 950 km
Dienstgipfelhöhe	8 800 m
Bewaffnung	3x MG 17; 3 x MG 151/20; 1x MG 81Z
Besatzung	3 - 4

Junkers Ju 88 C-6 Z/N Nightfighter

During the Second World War, the Junkers Ju 88 embodied what the Euro Fighter, the Rafale and the F-22 represent in our day. The MRCA - Multi-Role Combat Aircraft. It served as a conventional high altitude bomber, a dive bomber and was just as effective as a night fighter or even a torpedo bomber engaging surface vessels. It could also be used as a tank killer and against railway targets, or even as a mine-layer or reconnaissance aircraft. During its final days it was used as the bomb-carrier in a composite unit under a Me 109 or Fw 190. The Ju 88 was still in full production at the end of the Second World War and up to this point in time more Ju 88's had been built than all the other Luftwaffe bombers put together - over 15000 aircraft. Designed and built as a fast bomber, the Ju-88 soon set the World's first Speed Record over a 1000 km (621 mile) course. In March 1938 it reached a speed of 517km/h (321mph) - a speed that fighter aircraft of the period could not achieve! Right from the beginning, the specification for the Ju 88 issued by the RLM (Imperial Aviation Ministry) included the roles of Daylight Attack and Heavy Night Fighter. The Attack version prototypes were the Ju 88 Z-15 and Z-19, which allowed for a nose armament whilst still retaining the glass fuselage front. The first production model was the Ju 88C-2 (based on the Ju 88A-1) with a metal nose to accommodate four cannon. The bombing equipment was only partially dispensed with. The first unit to receive the new aircraft was Fighter Wing 30 that had formed the first Attack Squadron during operations in Norway. With a range of over 2500 km (1550 miles) and excellent flight characteristics it was the ideal aircraft for General Kammhuber's newly established Night Fighting. The first unit in Holland to receive the new aircraft was the 2nd Night Fighter Wing in Gilze-Rijen to support their successful long range operations against British Bomber Bases. The following series, the Ju 88C-4 - was based on the Ju 88A-5 which in contrast to the A-1 had an extended wing and more powerful engines. The most prolific and indeed ultimate Ju 88-Attack/Night-Fighter was however the Ju 88C-6 (based on the Ju 88A-4) which was mainly deployed in Night Fighter units. As early as the end of 1942 the Ju 88C-6 - fitted with the FuG 202 Lichtenstein BC - was the first machine to have an on-board radar. When the improved FuG 212 Lichtenstein C-1 arrived, an on-board radar was finally available in large quantities. The Ju 88C thus became the Luftwaffe's most important night fighter and saw active service in all theatres of war from the Arctic down to Africa. The Ju 88C was however still used in the attack role in operations against ships in the North Sea and the Mediterranean, as well as on the Eastern Front in particular against railway targets. Production of the Ju 88C was stopped at the end of 1944 after a total 3964 of these aircraft had been built.

Technical Data:

Wingspan:	20.08 m (65ft 10ins)
Length:	14.36 m (47ft 1ins)
Height:	5.07 m (16ft 7ins)
Engines:	2x Junkers Jumo 211J
Power:	1410 Bhp
Empty Weight:	8100 kg (17857 lbs)
Max. Take-off Weight:	12460 kg (27470 lbs)
Maximum Speed:	510 km/h (317 mph)
Cruising Speed:	490 km/h (305 mph)
Landing Speed:	145 km/h (90 mph)
Normal Range:	2 950 km (1830 miles)
Service Ceiling:	8 800 m (28900 ft)
Armament:	3 x MG 17; 3 x MG 151/20; 1x MG 81Z
Crew:	3 - 4

Form hergeestelt en in eigendom van Revell GmbH. Wierrechtelijke Nachahmungen werden gerichtlich vervolgt.
 Ce produit est propriété de la société Revell GmbH. Toute utilisation ou duplication frauduleuse sera l'objet de poursuites en justice.
 Modelado y en propiedad de Revell GmbH. Imitaciones ilícitas serán perseguidas por la ley.
 Forma prodotta da Revell GmbH e di proprietà della stessa impresa, la quale procederà legalmente contro ogni imitazione abusiva.
 Mallon Revell GmbH valmistama ja omaisus. Laittoaan kopioitain tulkaan puustutamaan oikeudellisiin toimin.
 Formen er produceret og er af Revell GmbH. Efterligning uden tilladelse vil bli gjenstand for rettslig forfølgelse.
 Produkcja i prawa własności firmy Revell GmbH. Nielegalne podrobienie jest zabronione pod odpowiedzialnością sądowną.
 Model Revell GmbH Ilmaston omakijäilä on alijedilijä. Kaikissa muissa tekijäoikeuksissa on pidettävä.
 A forma e stătuată și e în proprietate Revell GmbH. A pogelesse ulnarzătoacă este hărsălită prin lege.

Model manufactured by and property of Revell GmbH. Illegal imitations are subject to prosecution.
 Vorm vervaardigd door en eigendom van Revell GmbH. Onrechtmatige nabootsingën worden gerechtelijk vervolgd.
 Formas produzidas e de propriedade da Revell GmbH. Cópias não autorizadas serão processadas juridicamente como determinado na lei.
 Modellen tillverkad av och ällör Revell GmbH. All kopiering beivras enligt lagen om upphovsrätt.
 Formen er fremstillet af Revell GmbH som også har ejendomsret. Lovstridige efterligninger sagsages.
 Modelь изготовлена и является собственностью фирмы Revell GmbH. Преподобные подделка преследуются в судебном порядке.
 H prodaja katanzke zabronje kaj prepizbe ovga izkopraba ihe Revell GmbH. Ce podobnece pizboje vo kazab. ikovne dikovnije.
 Taz by "ylyvden" rmos Revell GmbH a e gijn vlastnikov. Priz nepizboz'ym parodobnen'iam se bude post.govaj sudni cestou.
 Forma je proizvedena i je vlasništva Revell GmbH. Neovlađene kopije bodo pravno kažnjene.

Benötigte Farben / Used Colors

Benötigte Farben
Required colours

Peintures nécessaires
Benodigde kleuren

Pinturas necesarias
Tintas necessárias

Colori necessari
Använda färger

Tarvittavat värit
Du trenger følgende farger

Nødvendige farger
Необходимые краски

Potrzebne kolory
Απαιτούμενα χρώματα

Gerekli renkler
Potřebné barvy

Szükséges színek
Potrebne barve

A

Schwarzgrün, matt 40
Black green, matt
Vert noir, mat
Zwartgroen, mat
Negro verosado, mate
Verde-preto, mate
Nero verde, opaco
Svartgrön, matt
Mustanvihreä, matta
Sortgrön, mat
Sortgrønn, matt
Черно-зеленый, матовый
Czarnozielony, matowy
Πρασινόματρο, ματ
Siyah yeşil, mat
Feketeszöld, matt
Černozelelá, matná
Černozelela, brez leska

B

Dunkelgrün, matt 39
Dark green, matt
Vert foncé, mat
Donkergroen, mat
Verde oscuro, mate
Verde-escuro, mate
Verde scuro, opaco
Mörkgrön, matt
Tummanvihreä, matta
Mörkgrön, mat
Mörkgrønn, matt
Темно-зеленый, матовый
Ciemnozielony, matowy
Πράσινο σκούρο, ματ
Koyu yeşil, mat
Sötétzöld, matt
Tmavomodrá, matná
Temnozelená, brez leska

C

Hellblau, matt 49
Light blue, matt
Bleu clair, mat
Lichtblauw, mat
Azul claro, mate
Azul-claro, mate
Blu chiaro, opaco
Ljusblå, matt
Vaaleansininen, matta
Lysblå, mat
Lysblå, matt
Светло-синий, матовый
Jasnoniebieski, matowy
Μπλε ανοιχτό, ματ
Açık mavi, mat
Világoskék, matt
Světle modrá, matná
Svetlomodrá, brez leska

D

mausgrau, matt 47
mouse grey, matt
gris souris, mat
muisgris, mat
gris ratón, mate
cinzento pardo, fosco
grigio topo, opaco
musgrå, matt
hiirenharmaa, himmeä
musegrå, matt
musegrå, matt
мышинно-серый, матовый
myszy, matowy
γκρι ποντικίου, ματ
fare grisi, mat
mysi šedá, matná
egérszürke, matt
mišje siva, mat

E

helloliv, matt 45
light olive, matt
olive clair, mat
olijf-licht, mat
aceituna, mate
oliva claro, opaco
ljusoliv, matt
vaalean olivi, himmeä
lysoliv, mat
lys oliven, matt
светло-оливковый, матовый
jasnooliwk., matowy
ανοιχτό χακί, ματ
açik zeytuni, mat
svèlleolivová, matná
világos olív, matt
svetlo oliva, mat

F

staubgrau, matt 77
dust grey, matt
gris poussière, mat
stolgrjs, mat
ceniciento, mate
cinzento de pó, fosco
grigio sabbia, opaco
dammgrå, matt
pölyharmaa, himmeä
stovgrå, mat
stovgrå, matt
серый пыльный, матовый
szary kurz, matowy
χρώμα σκόνης, ματ
toz grisi, mat
prachově šedá, matná
porszürke, matt
prah siva, mat

G

karmirod, matt 36
carmin red, matt
rouge carmin, mat
karmijnrood, mat
carmin, mate
vermelho carmin, fosco
rosso carminio, opaco
karmínröd, matt
karmiiniropunainen, himmeä
karmínröd, matt
karmínröd, matt
красный кармин, матовый
karmiunpö, matowy
κόκκινο δαίηθο, ματ
lál rengi, mat
krbově červená, matná
kárminpiros, matt
šminka rdeča, mat

H

anthrazit, matt 9
anthracite grey, matt
anthracite, mat
antraciet, mat
antracita, mate
antracite, opaco
antracit, mat
antrasitt, himmeä
koksgrå, mat
antrasitt, matt
антрацит, матовый
antracyt, matowy
ανθρακί, ματ
antrasit, matt
antracit, matná
antracit, matt
tanno siva, matt

I

laubgrün, seidenmatt 364
leaf green, silky-matt
vert feuille, satiné mat
bladgroen, zijdemat
verde follaje, mate seda
verde folgia, opaco seta
lövgrön, sidematt
lehdenvihreä, silkkihimmeä
lövgrön, silkematt
lövgrön, silkematt
лиственно-зеленый, шелк-матовый
zielony liściasty, jedwabisto-matowy
πράσινο φυλλωμάτων, μεταξ, ματ
yaşrak yeşil, ipek mat
zelená jako listí, hedvábně matná
lombzöld, selyemmatt
list zelena, svila mat

J

schwarz, seidenmatt 302
black, silky-matt
noir, satiné mat
zwart, zijdemat
negro, mate seda
preto, fosco sedoso
nero, opaco seta
svart, sidematt
musta, silkkihimmeä
sort, silkematt
sort, silkematt
черный, шелконисто-матовый
czarny, jedwabisto-matowy
μαύρο, μεταξωτό ματ
siyah, ipek mat
černá, hedvábně matná
fekete, selyemmatt
črna, svila mat

K

aluminium, metallic 99
aluminium, metallic
aluminium, métallique
aluminium, metallic
aluminio, metalizado
aluminio, metálico
aluminio, metalico
aluminium, metallic
aluminium, metallikito
aluminium, metallak
aluminium, metallic
алюминиевый, металл
aluminium, metaliczny
αλουμίνιου, μεταλλικό
aluminium, metallak
aluminium, metallak
aluminium, metallak
алюминиевый, металл
aluminium, metaliczny
αλουμίνιου, μεταλλικό
aluminium, metallak
aluminium, metallak
aluminium, metallak

L

rost, matt 83
rust, matt
rouille, mat
roest, mat
orin, mate
ferugem, fosco
color ruggine, opaco
rost, matt
ruoste, himmeä
rust, matt
rust, matt
ржавчина, матовый
rdzawy, matowy
χρώμα σκουριάς, ματ
pas rengi, mat
rozavá, matná
rozdsá, matt
rjava, mat

M

lederbraun, matt 84
leather brown, matt
brun cuir, mat
lederbruin, mat
marrón cuero, mate
castanho couro, fosco
marrone cuolo, opaco
läderbrun, matt
nahkanruskea, himmeä
läderbrun, matt
larbrun, matt
коричневая кожа, матовый
brunatny jak skóra, matowy
καφέ δέρματος, ματ
deri kahverengi, mat
koženě hnědá, matná
börbarna, matt
koža java, mat

75 %

eisen, metallic 91 +
steel, metallic
coloris fer, métallique
ijzerkleurig, metallic
ferroso, metalizado
ferro, metálico
ferro, metalico
járnfärg, metallic
teräksenväriäinen, metallikito
jern, metallak
jern, metallic
стальной, металл
żelazo, metaliczny
σιδηρού, μεταλλικό
demir, metallic
železná, metaliza
vas, metall
železna, metalik

25 %

anthrazit, matt 9
anthracite grey, matt
anthracite, mat
antraciet, mat
antracita, mate
antracite, fosco
antracite, opaco
antracit, matt
antrasitt, himmeä
koksgrå, mat
antrasitt, matt
антрацит, матовый
antracyt, matowy
ανθρακί, ματ
antrasit, mat
antracit, matná
antracit, matt
tanno siva, matt

O

gelb, matt 15
yellow, matt
jaune, mat
geel, mat
amarillo, mate
amarelo, fosco
giallo, opaco
gul, matt
gul, matt
keltainen, himmeä
gul, matt
gul, matt
желтый, матовый
żółty, matowy
κιτρινο, ματ
sari, mat
žlutá, matná
sárga, matt
rumena, mat

P

schwarz, matt 8
black, matt
noir, mat
zwart, mat
negro, mate
preto, fosco
nero, opaco
svart, matt
musta, himmeä
sort, matt
gul, matt
gul, matt
черный, матовый
czarny, matowy
μαύρο, ματ
siyah, mat
černá, matná
fekete, matt
črna, mat

Q

braun, matt 85
brown, matt
brun, mat
bruin, mat
marrón, mate
castanho, fosco
marrone, opaco
brun, matt
ruskea, himmeä
brun, mat
brun, matt
коричневый, матовый
brązowy, matowy
καφέ, ματ
kahverengi, mat
hnědá, matná
barna, matt
rjava, mat

90 %

weiß, matt 5
white, matt
blanc, mat
wit, mat
bianco, mate
branco, fosco
bianco, opaco
vit, matt
valkoinen, himmeä
hvid, mat
hvit, matt
белый, матовый
biały, matowy
λευκό, ματ
beyaz, mat
bílá, matná
fehér, matt
bela, mat

+

blau, matt 56
blue, matt
bleu, mat
blauw, mat
azul, mate
azul, fosco
blu, opaco
blå, matt
sininen, himmeä
blå, matt
blå, matt
синий, матовый
niebieski, matowy
μπλε, ματ
mavi, mat
modrá, matná
kék, matt
plava, mat

S

Hellgrau, matt 76
Light grey, matt
Gris clair, mat
Lichtgrjs, mat
Gris claro, mate
Cinzento-claro, mate
Grigio chiaro, opaco
Ljusgrå, matt
Vaaleansininen, matta
Lysgrå, mat
Lysgrå, matt
Светло-серый, матовый
Jasnoszary, matowy
Μπλε ανοιχτό, ματ
Açık gri, mat
Világosszürke, matt
Světle šedivá, matná
Svetlosiva, brez leska

80 %

Hellblau, matt 49 +
Light blue, matt
Bleu clair, mat
Lichtblauw, mat
Azul claro, mate
Azul-claro, mate
Blu chiaro, opaco
Ljusblå, matt
Vaaleansininen, matta
Lysblå, mat
Lysblå, matt
Светло-синий, матовый
Jasnoniebieski, matowy
Μπλε ανοιχτό, ματ
Açık mavi, mat
Világoskék, matt
Světle modrá, matná
Svetlomodrá, brez leska

20 %

weiß, matt 5
white, matt
blanc, mat
wit, mat
bianco, mate
branco, fosco
bianco, opaco
vit, matt
valkoinen, himmeä
hvid, mat
hvit, matt
белый, матовый
biały, matowy
λευκό, ματ
beyaz, mat
bílá, matná
fehér, matt
bela, mat

U

farbos, glänzend 1
clear, gloss
incoloro, brillante
kleurloos, glansend
incoloro, brillante
incolore, brillante
trasparente, lucante
färglös, blank
värtilön, kiiltävä
farvelos, skinnende
klar, blank
бесцветный, блестящий
bezbarwny, blyszczący
όχρωμο, υαλοστερό
renksiz, parlak
bezbarevná, lesklá
szintelen, fényes
bezbarna, bleskajoča



Schwarzen Faden benutzen
Use black thread
Employer le fil noir
Gebruik zwarte draad
Utilizar hilo color negro
Utilizar fio preto
Usare filo nero
Använd svarta trådar
Käytä mustaa lankaa
Benyt en sort
Bruk svart
Использовать черные нитки
Użyć czarne nici
χρησιμοποιήστε την καφέ μούρο
Kahverengi siyah iplik kullanın
Použit černé vlákno
barna fekete fonalat kell használni
Uporabljati črni nit

Nicht enthalten
Not included
Non fourni
Behoort niet tot de levering
No incluido
Non compresi
Não incluído
Ikke medsendt
Ingår ej
Ikke inkluderet
Eivät sisälly
Δεν συμπεριλαμβάνεται
Не содержится
Nem tartalmazza
Nie zawiera
Ni vsebovano
Igerisinde bulunmamaktadır
Není obsaženo



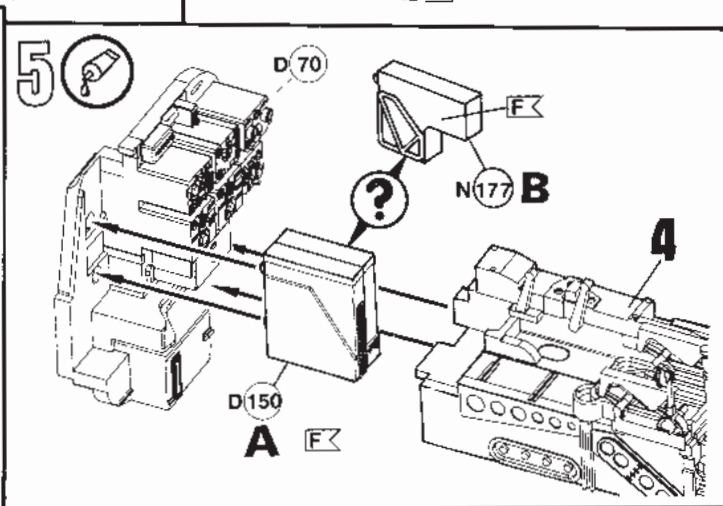
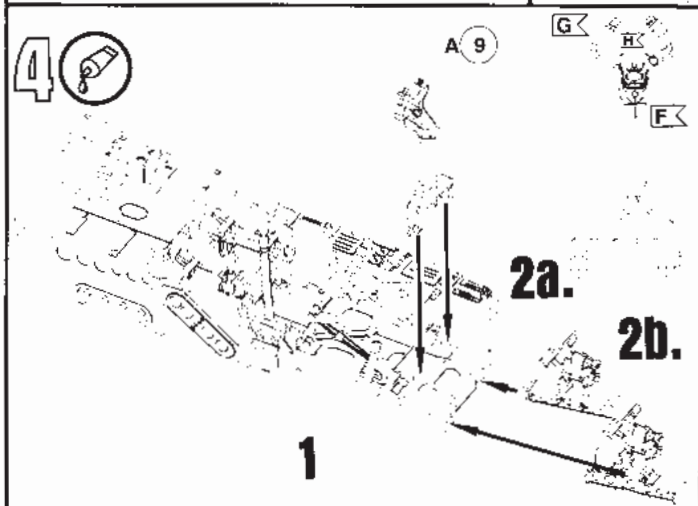
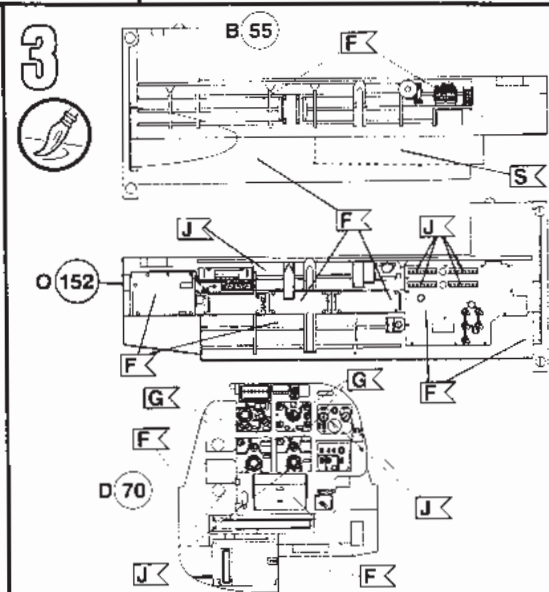
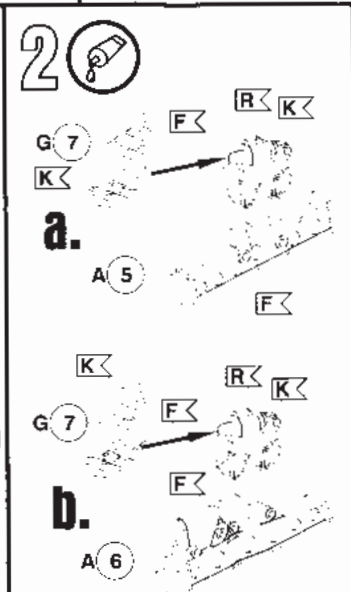
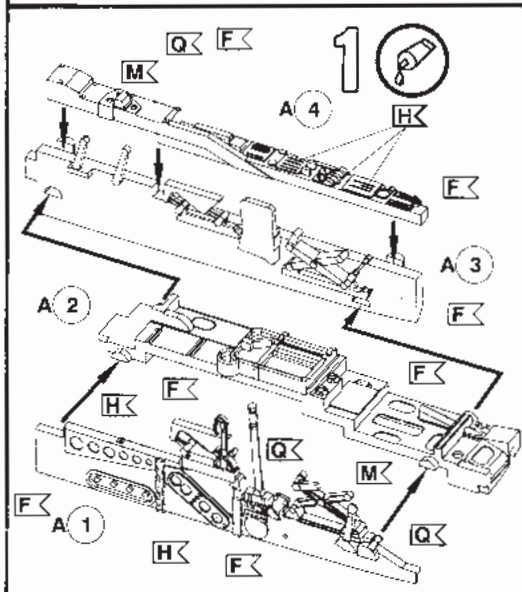
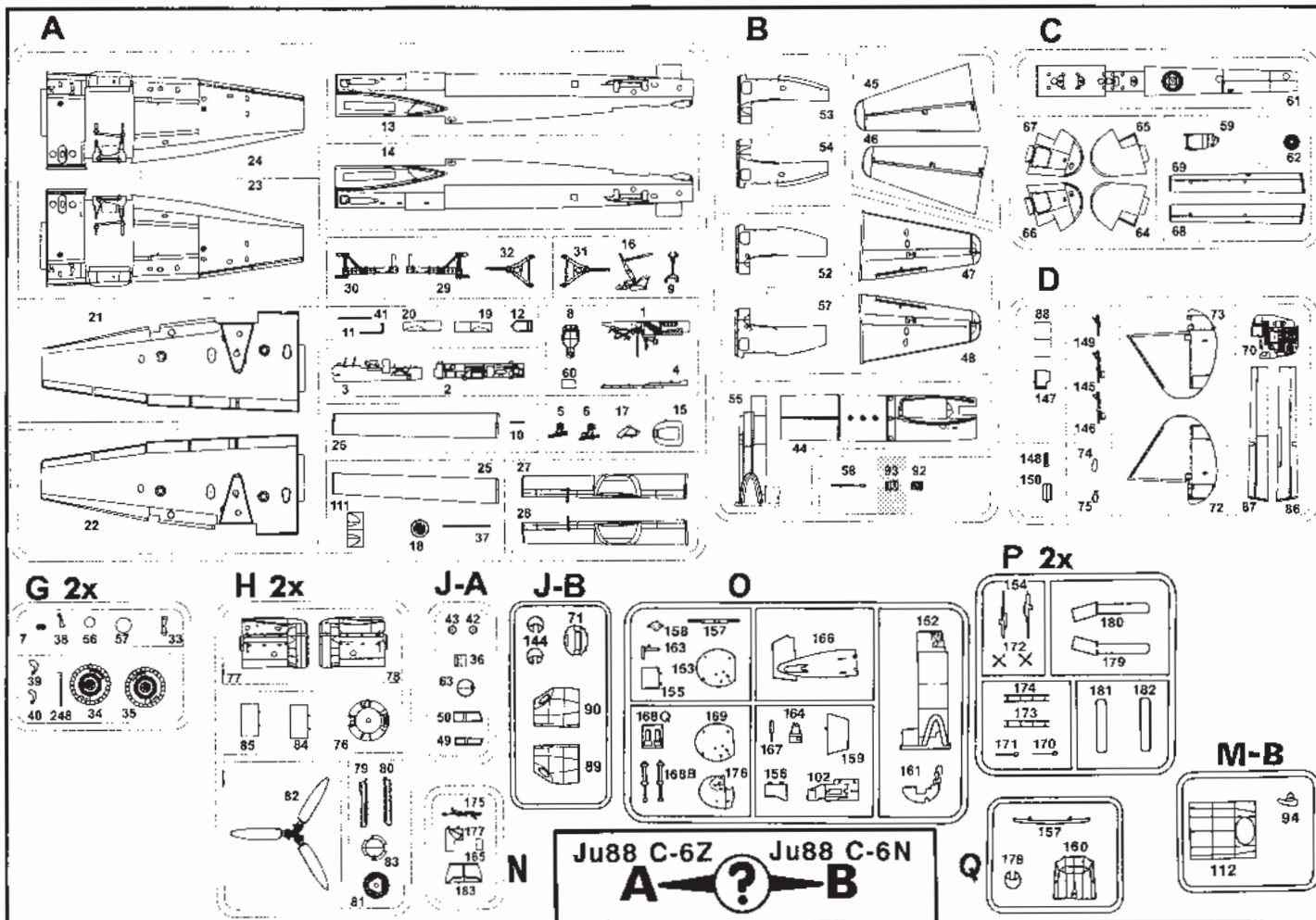
Loch bohren
Make a hole
Faire un trou
Maak een gat
Practicar un taladro
Perfurar
Fare un foro
Borra hål
Poraa reikä
Der bores et hul
Bor hull
Проверить отверстие
wywiercić otwór
ανοίξτε τρύπα
Delik açın
Vyvrtat diru
lyukat furni
Narediti lukinjo

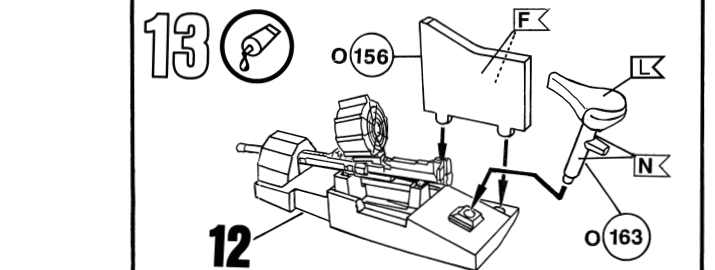
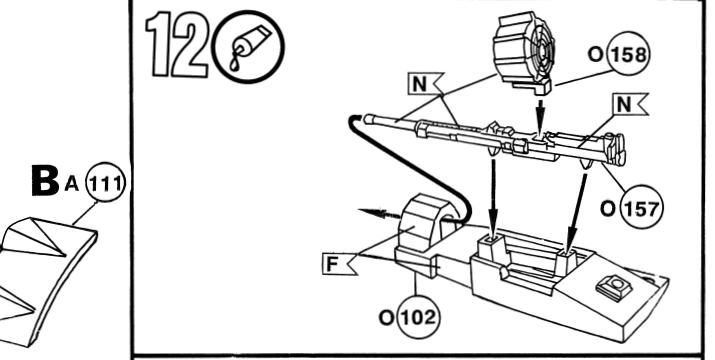
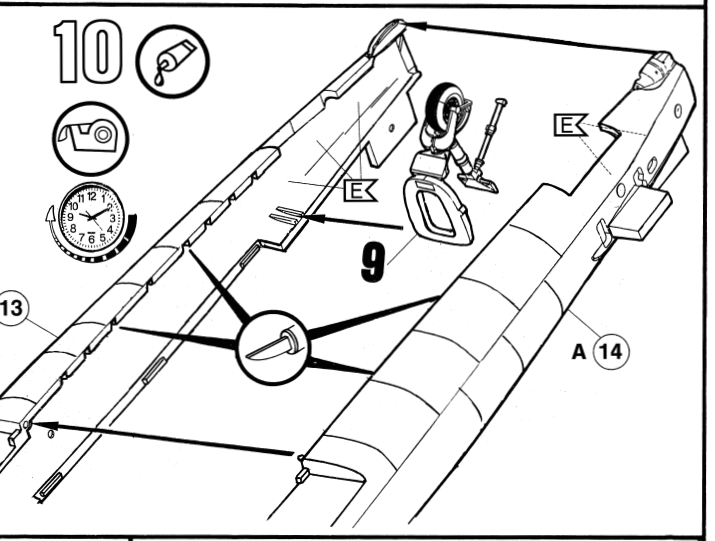
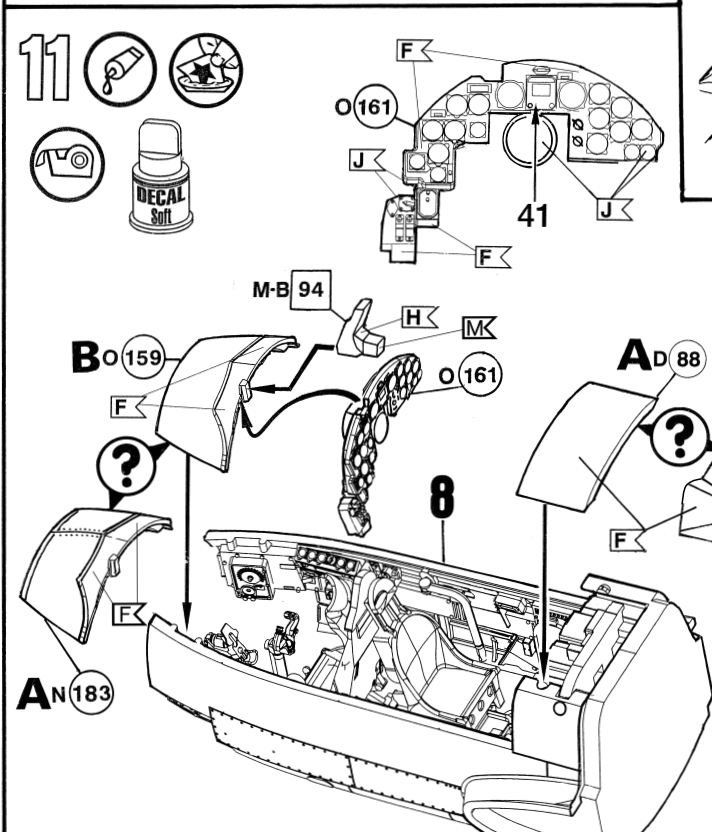
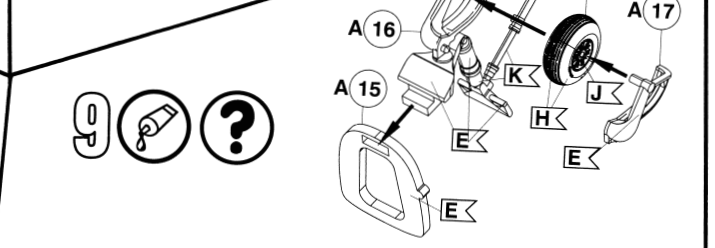
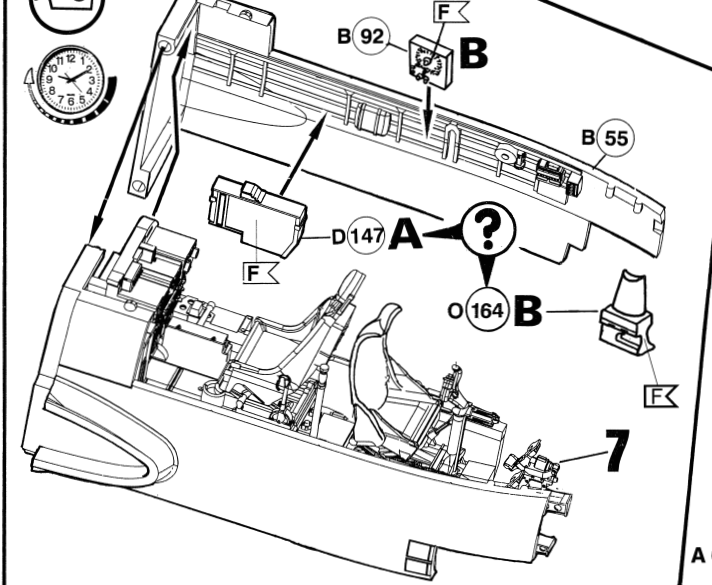
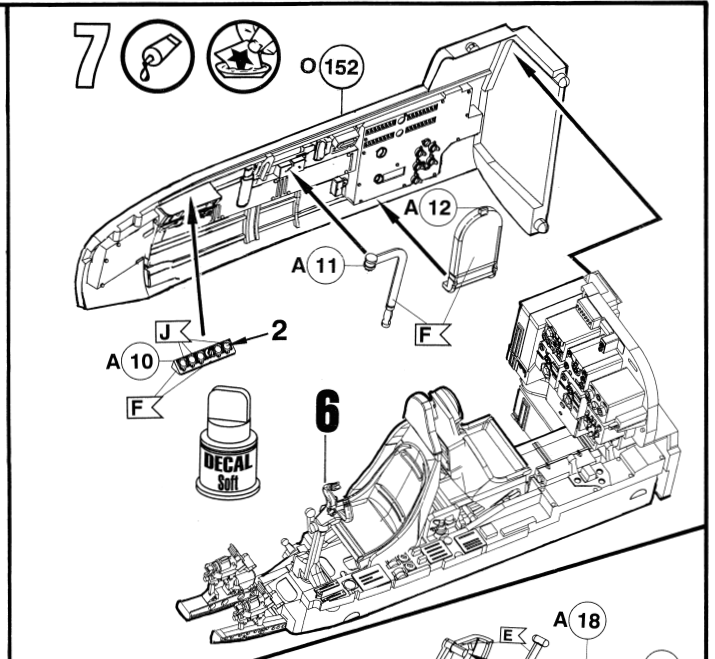
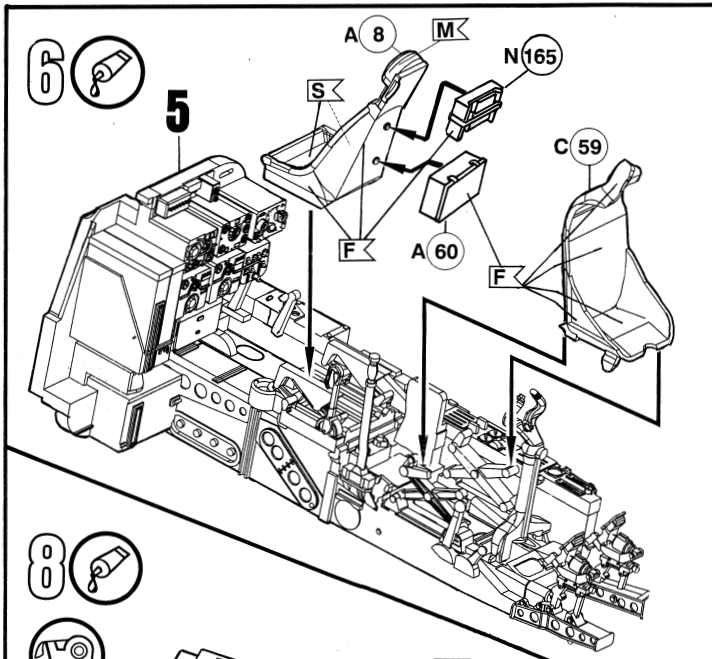


Bemalen
Paint
Peindre
Beschilderen
Pintar
Dipingere
Pintar
Mála
Male
Male
Maalaa
Pomalowaa
Befesteni
раскрасить
Pomalovat
Boyamak
Poslikati
Χρωματισμα

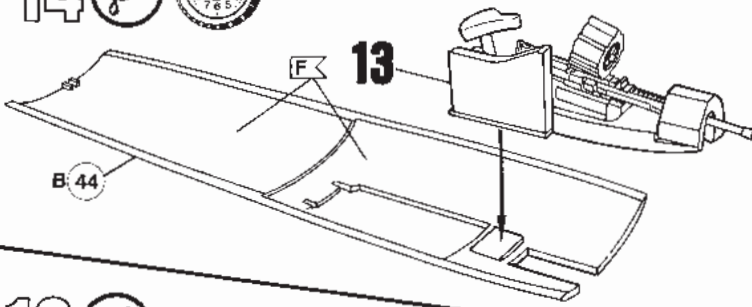






Nicht benötigte Teile
Parts not used
Pièces non utilisées
Piezas no necesarias
Peças não utilizadas
Parti non usate
Inte användat delar
Tarpeettomat osat
Ikke nødvendige dele
Deler som ikke er nødvendige
Неиспользованные детали
Elementy niepotrzebne
μη χρειαζόμενα εξαρτήματα
Gereksiz parçalar
Nepotřebné díly
fel nem használt alkatrészek
Nepotrebni deli

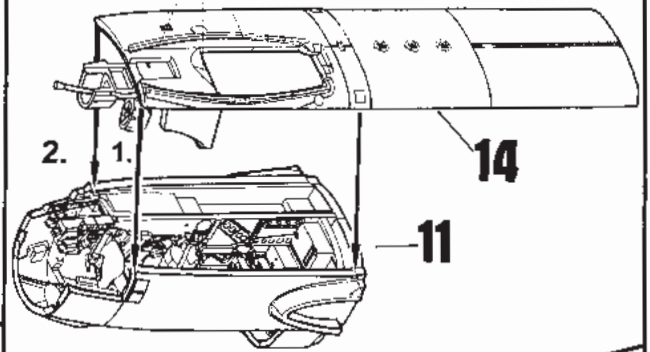




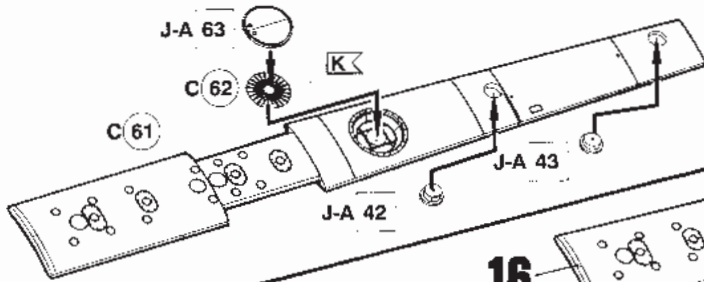
14  



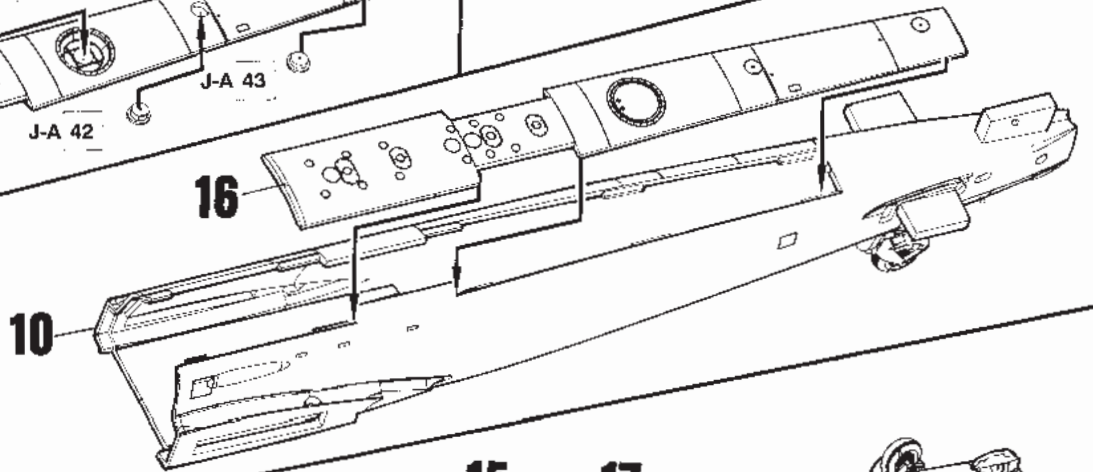
15    



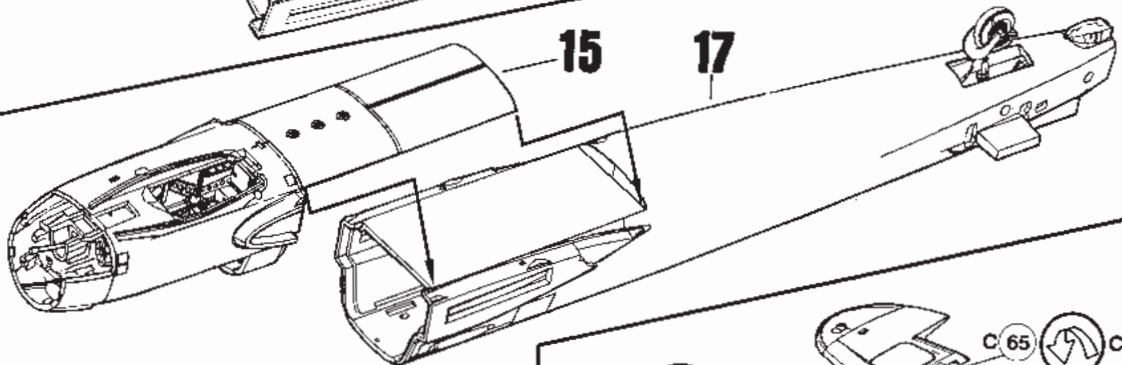
16 



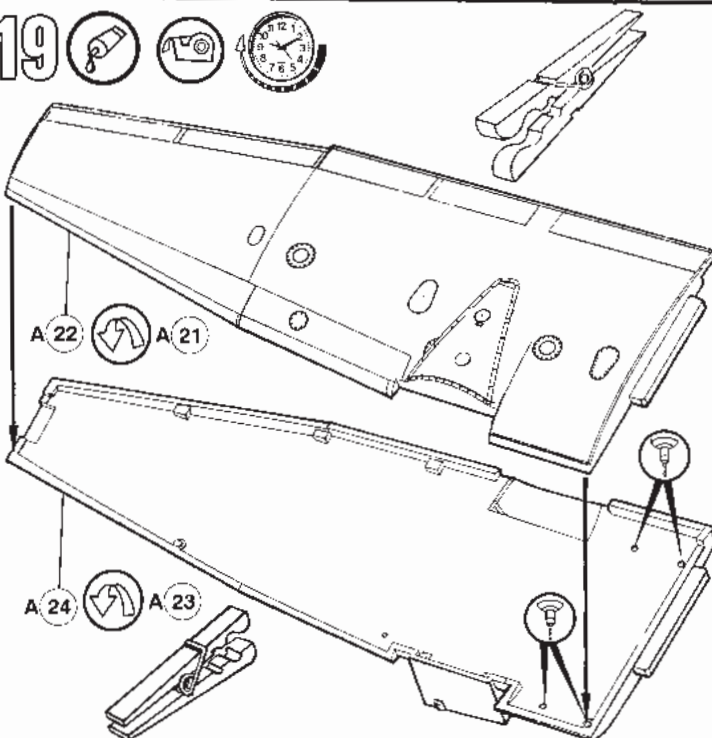
17 



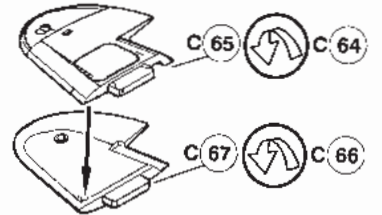
18 



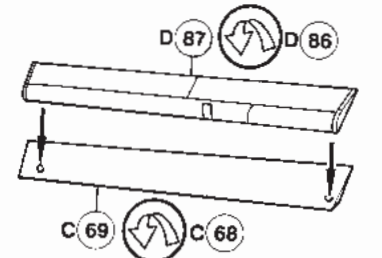
19   



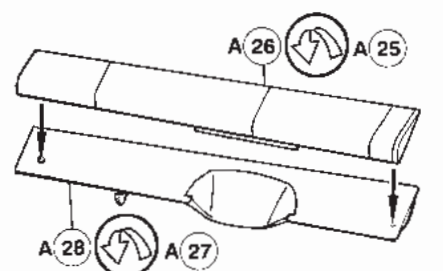
20 

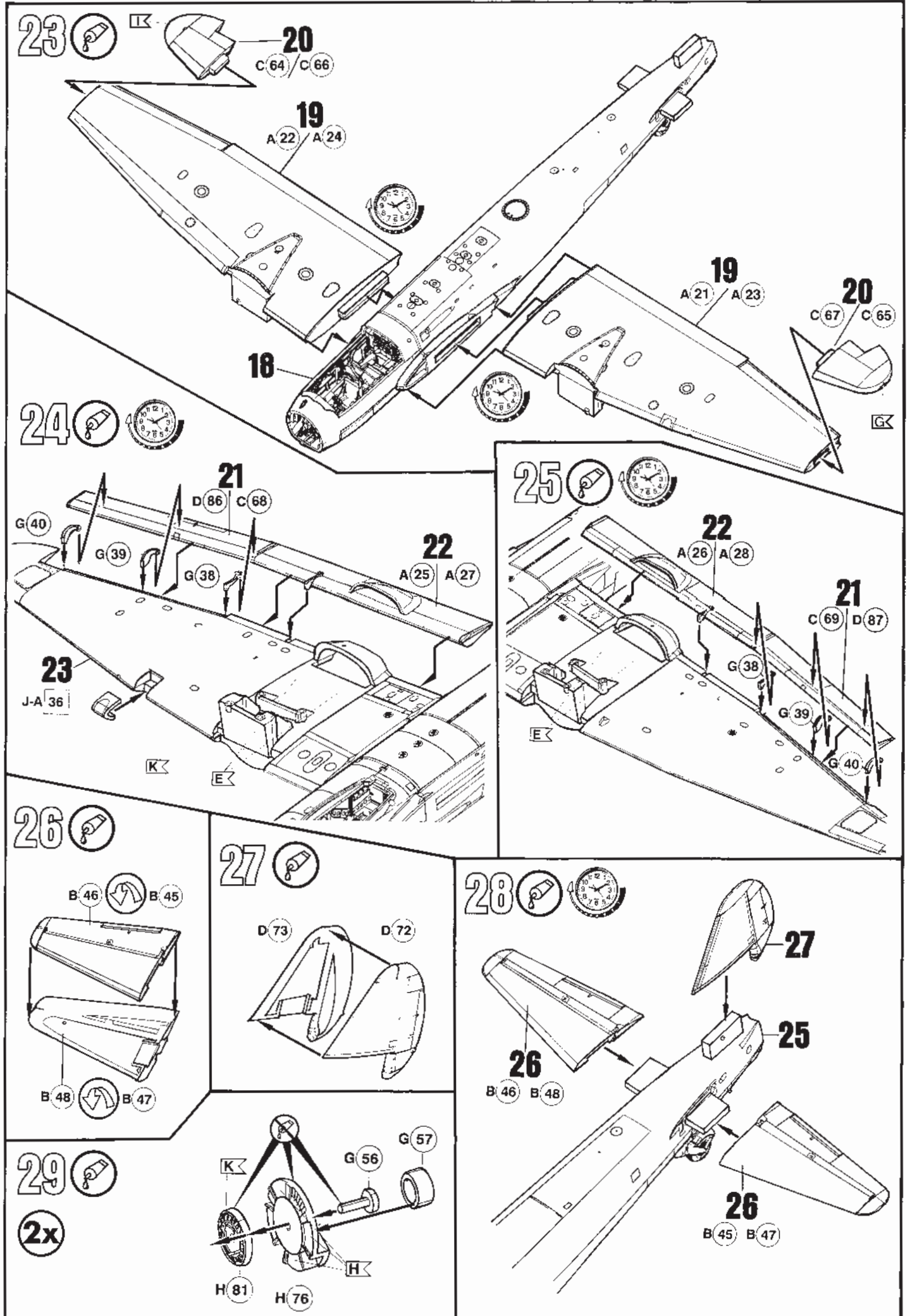


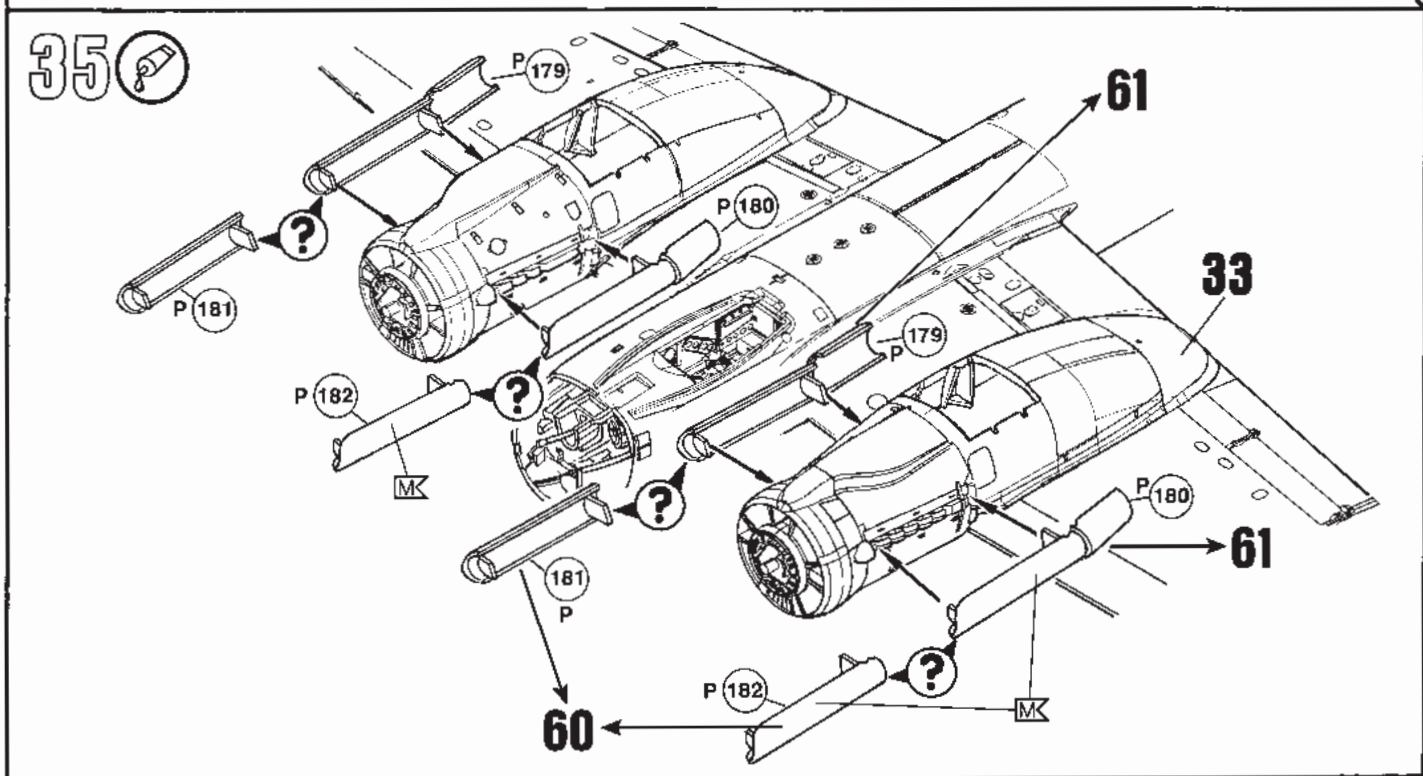
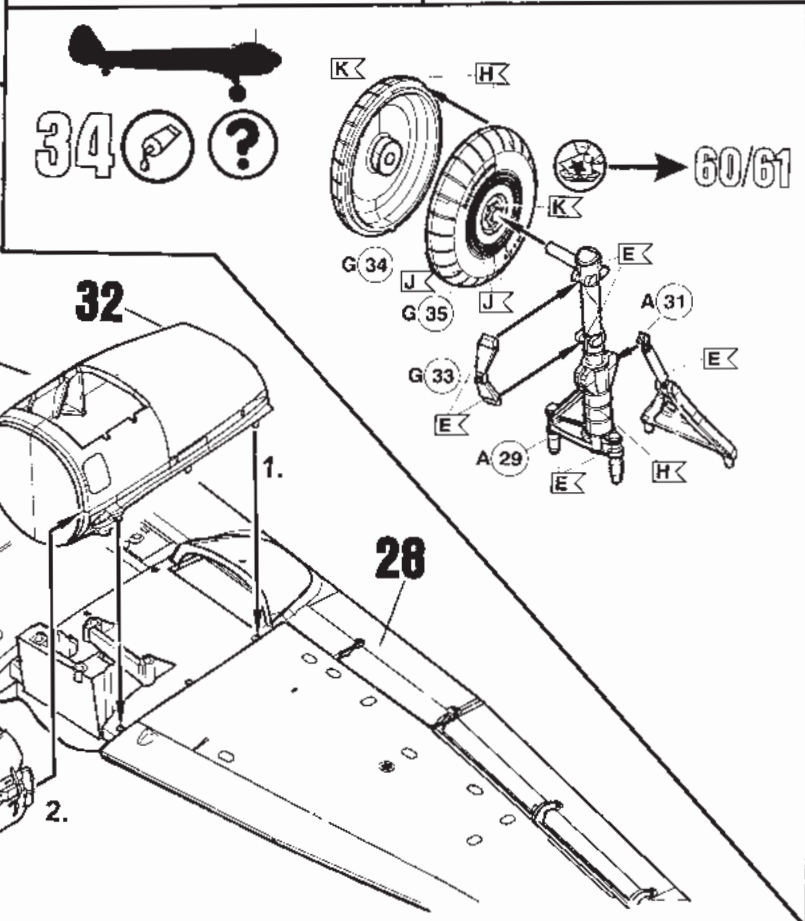
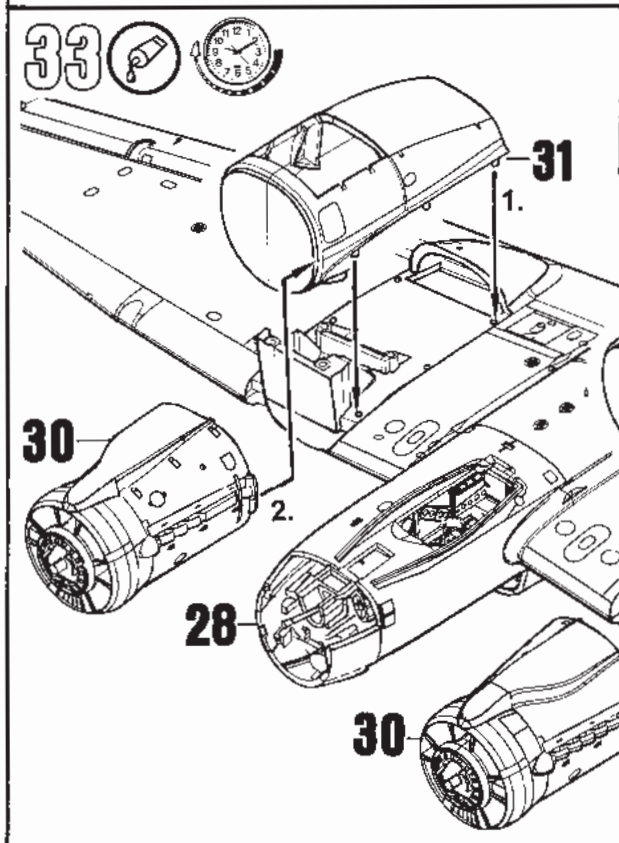
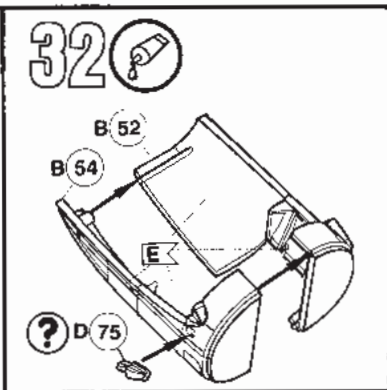
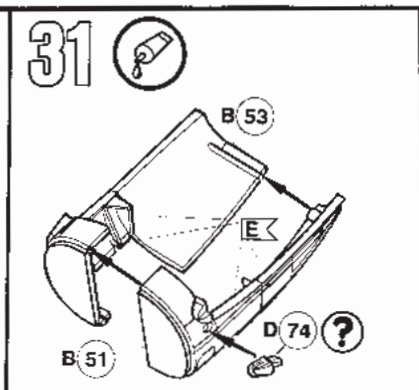
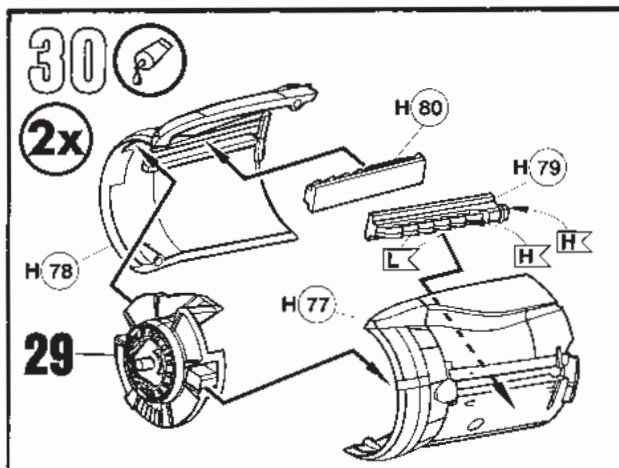
21 



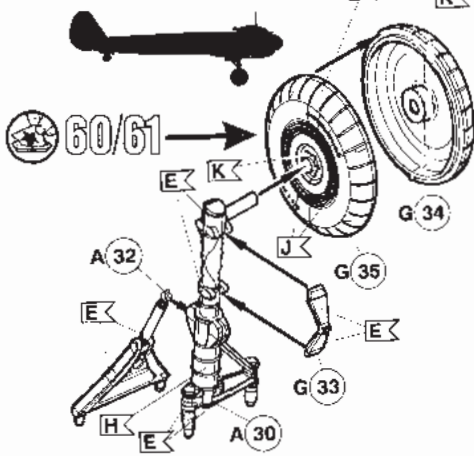
22 



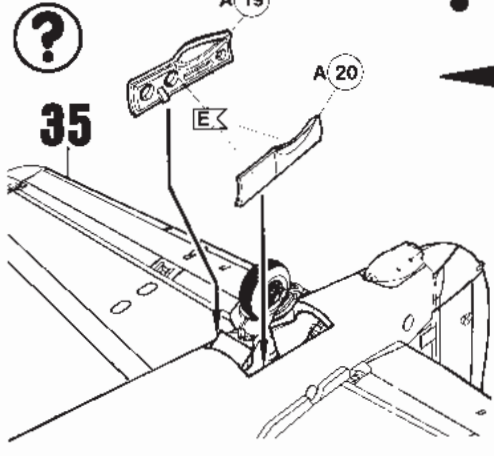




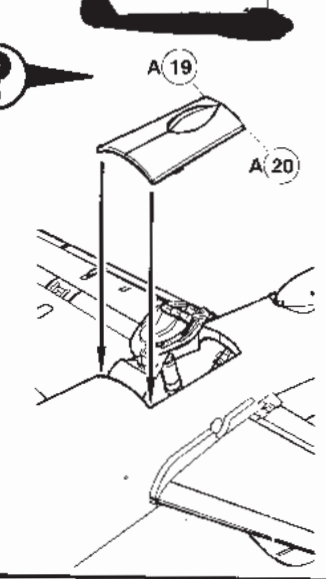
36 ?



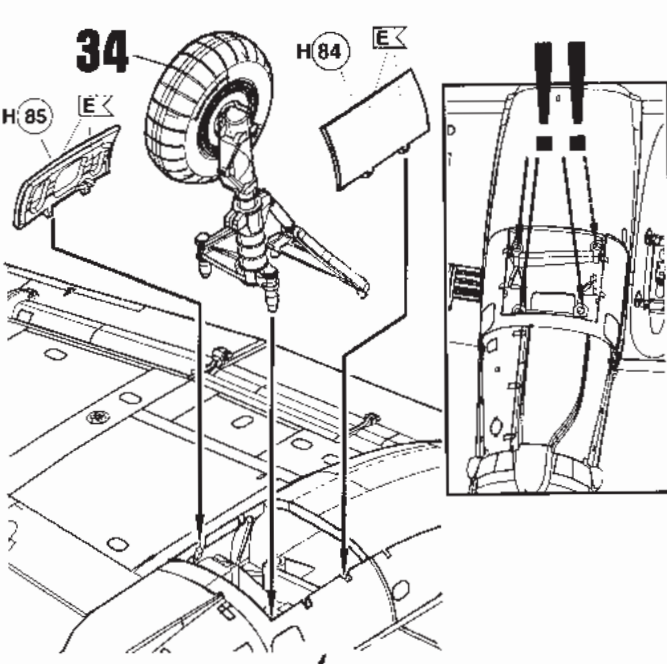
37 ?



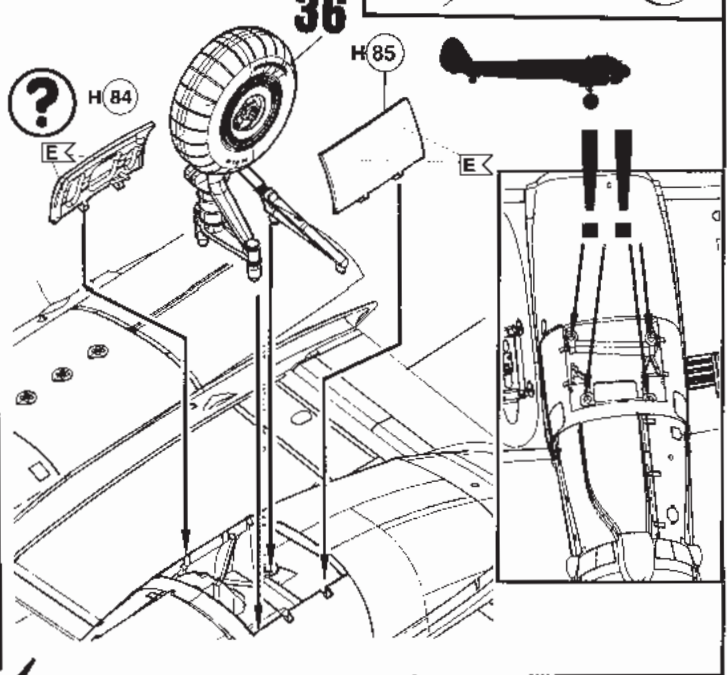
38 ?



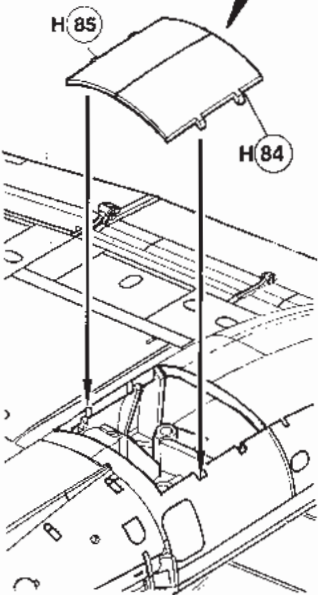
39 ?



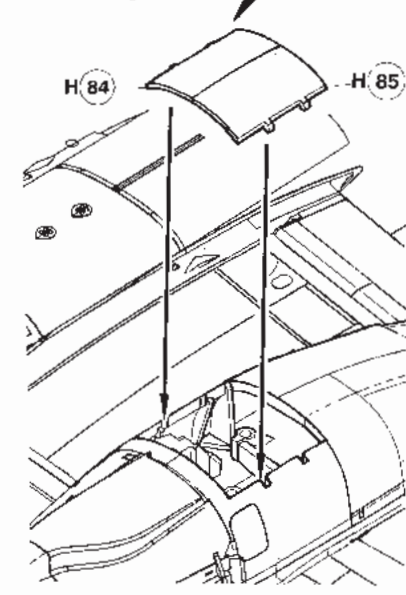
40 ?



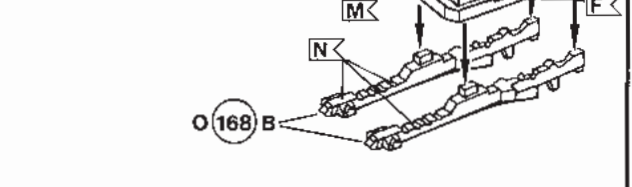
41 ?



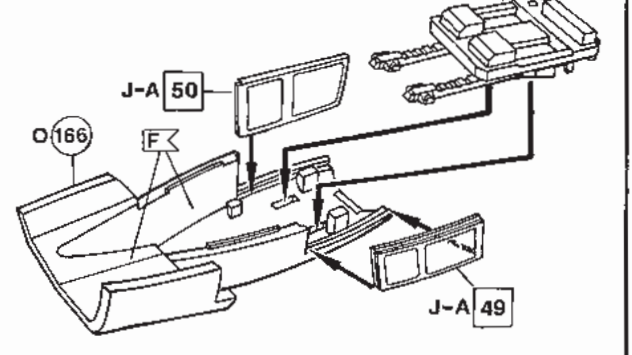
42 ?

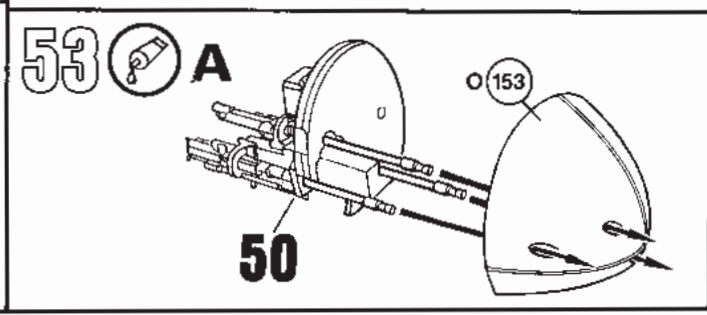
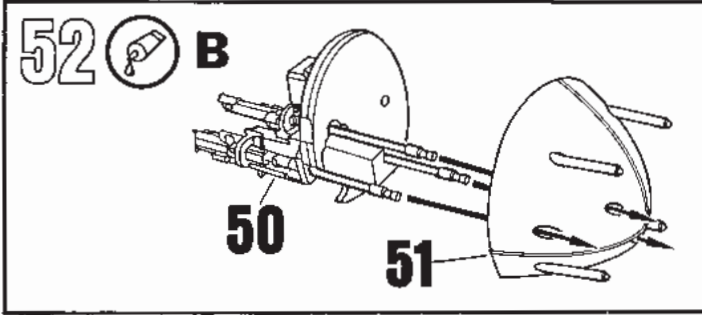
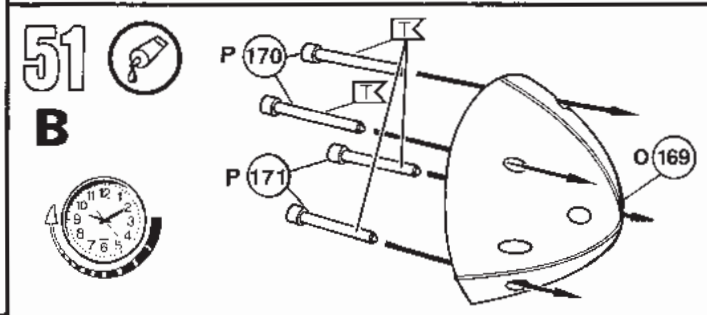
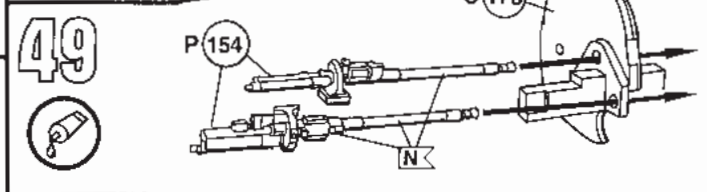
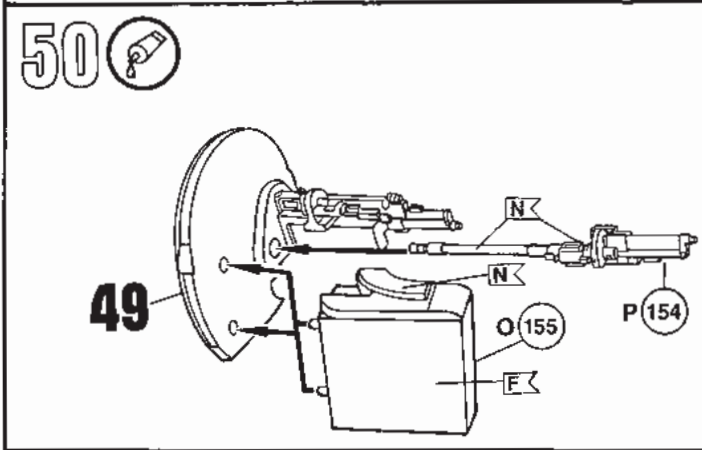
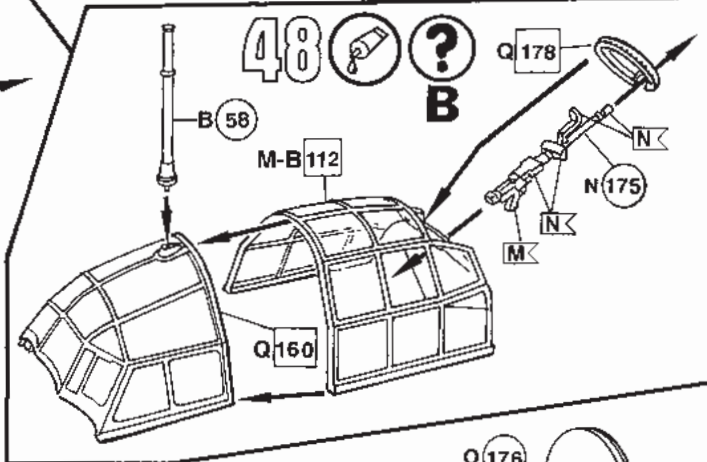
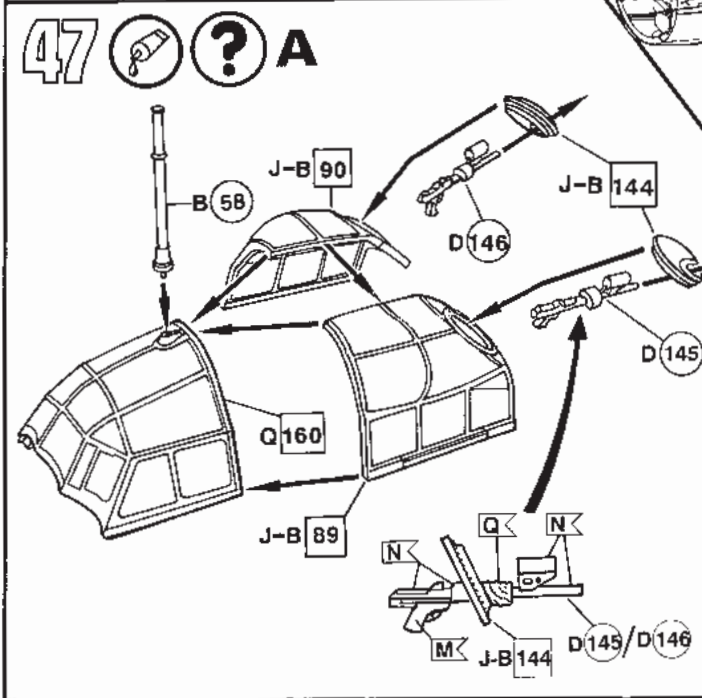
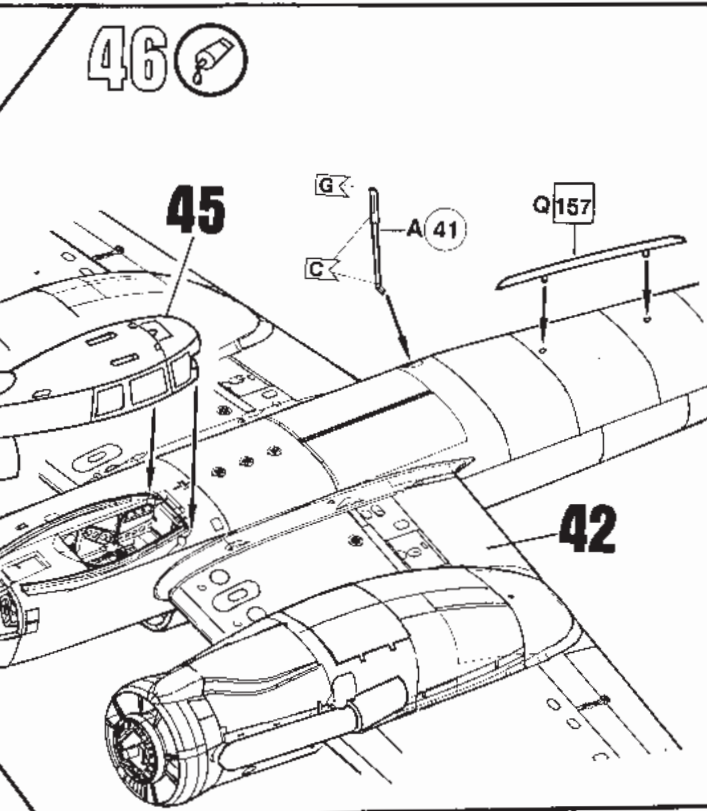
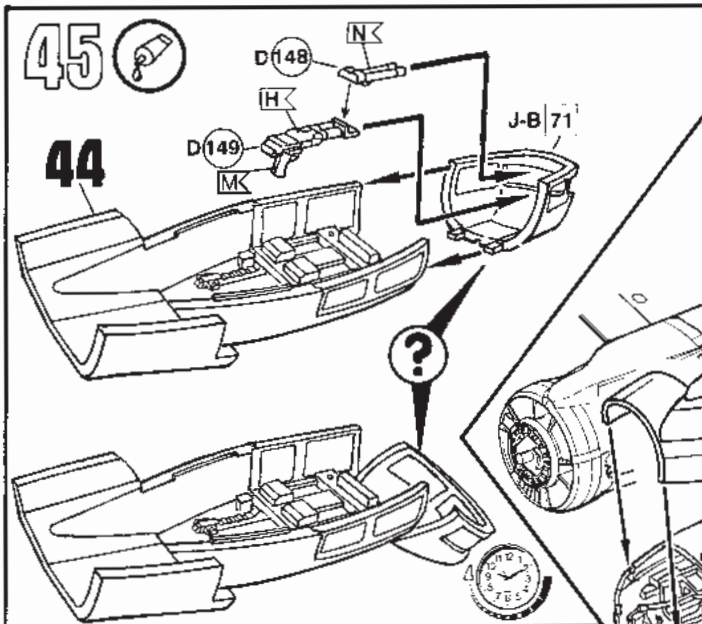


43 ?



44 ?



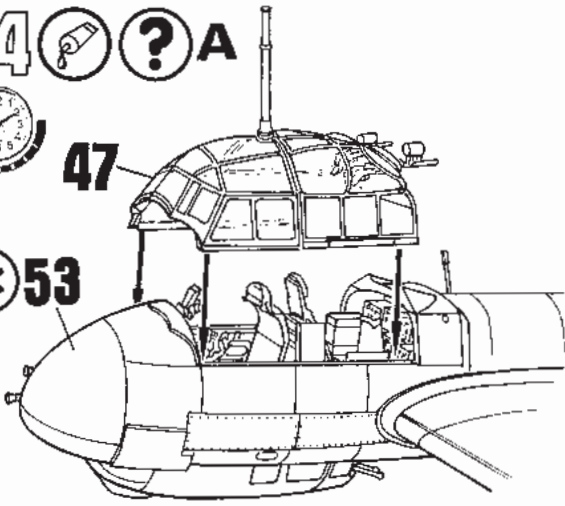


54 ? A



47

* 53

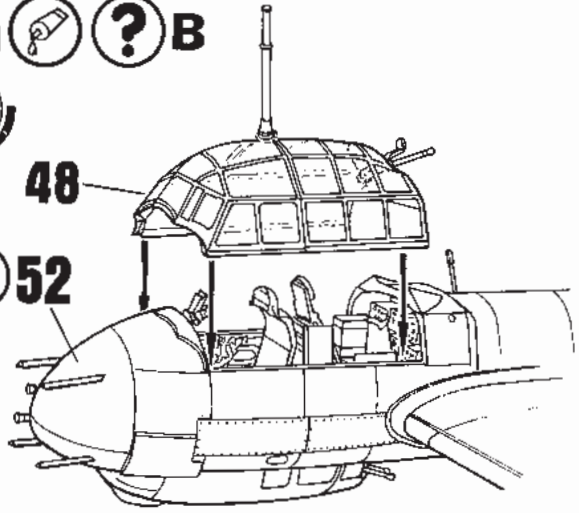


55 ? B



48

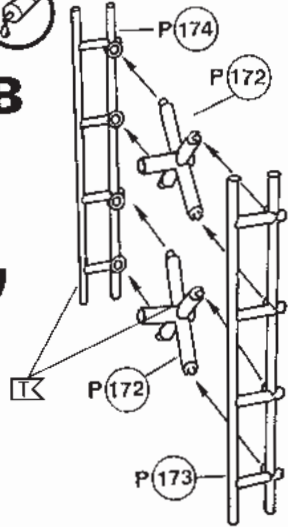
* 52



56 B

2x

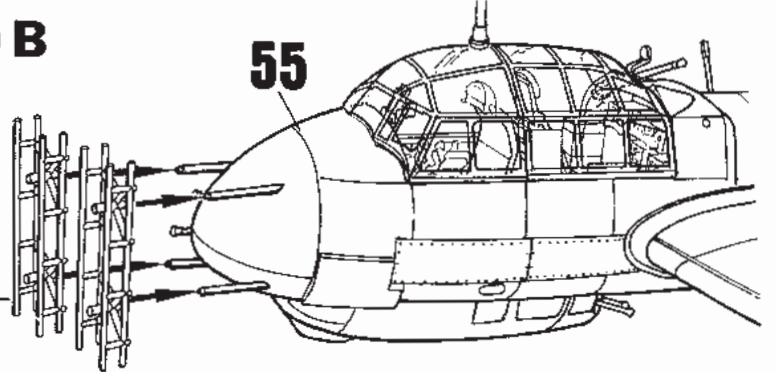
?



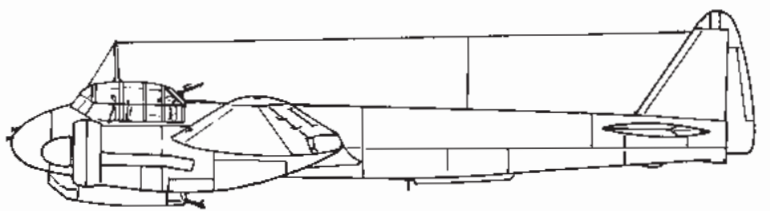
57 B



56



58



59

A

K

A

K

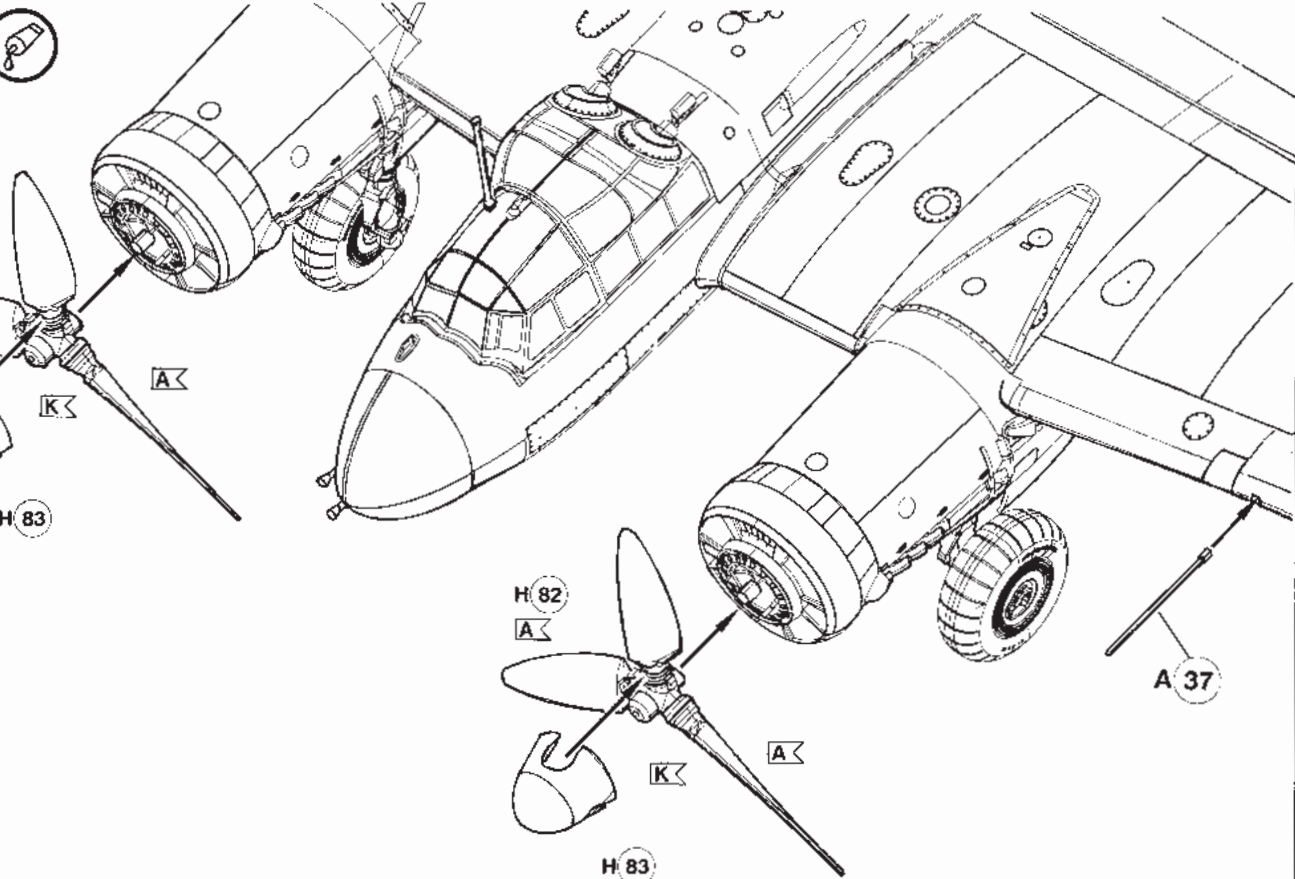
H 83

A

K

A

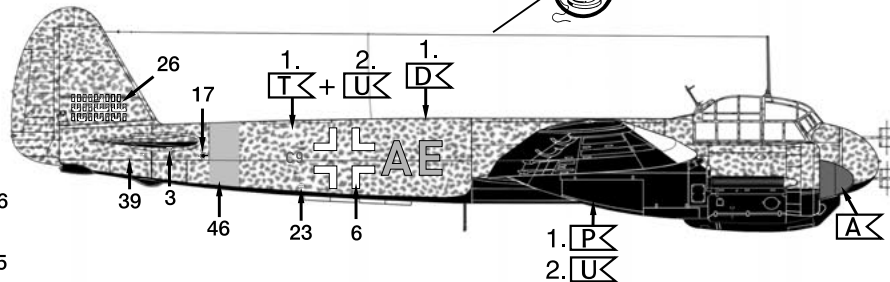
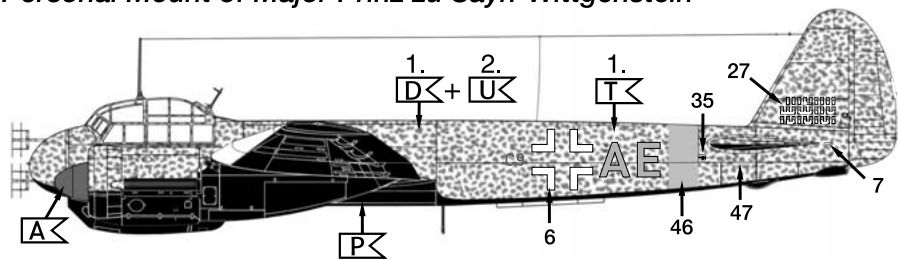
H 83



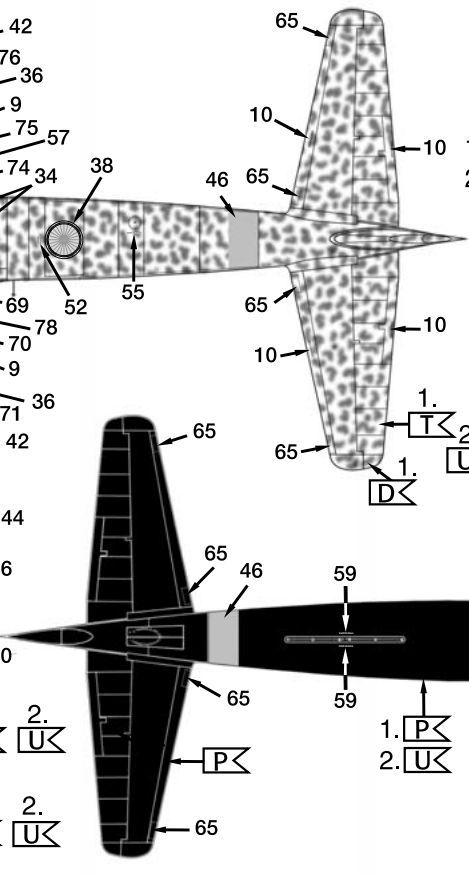
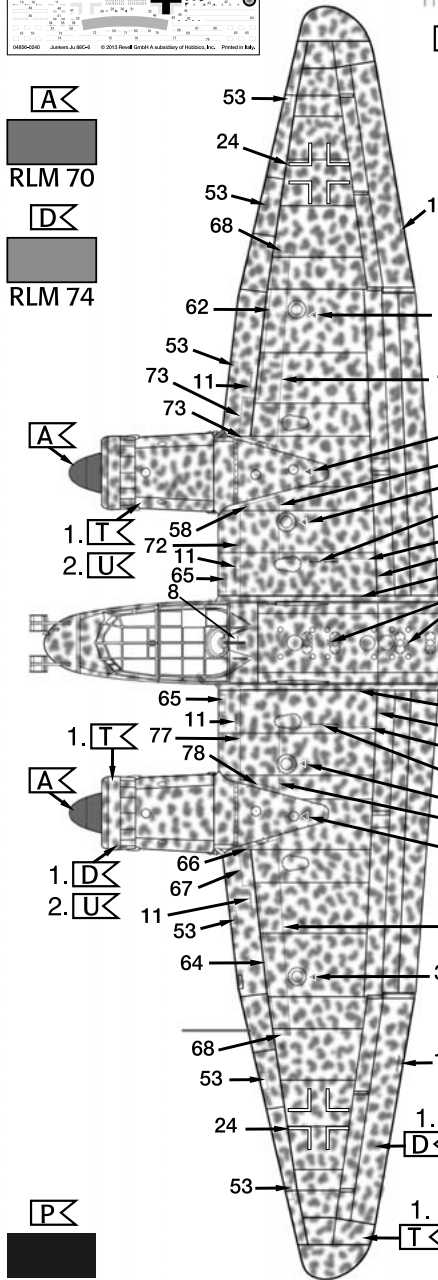
60



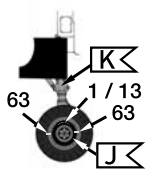
Junkers Ju 88C-6 of Stab. IV./NJG 5 at Orel; Soviet Union, Spring 1943 Personal Mount of Major Prinz zu Sayn-Wittgenstein



- A<
- RLM 70
- D<
- RLM 74

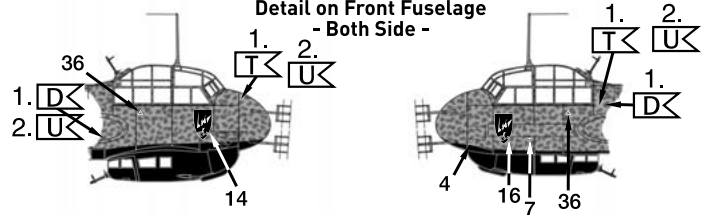


Detail on Main Gear - Both Side -

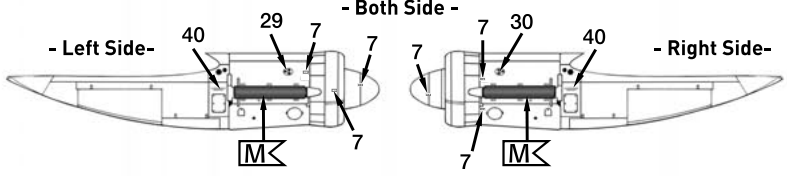


- P<
- M<
- T<
- RLM 76

Detail on Front Fuselage - Both Side -



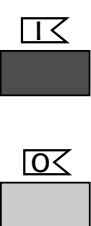
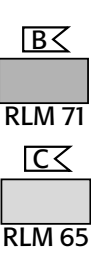
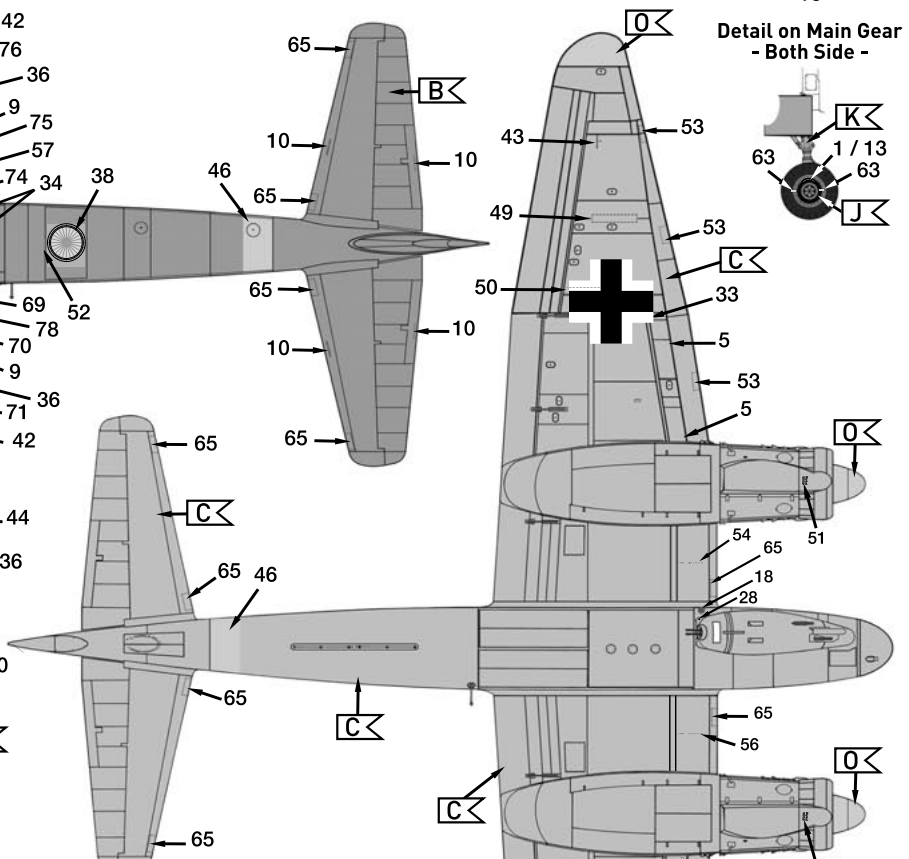
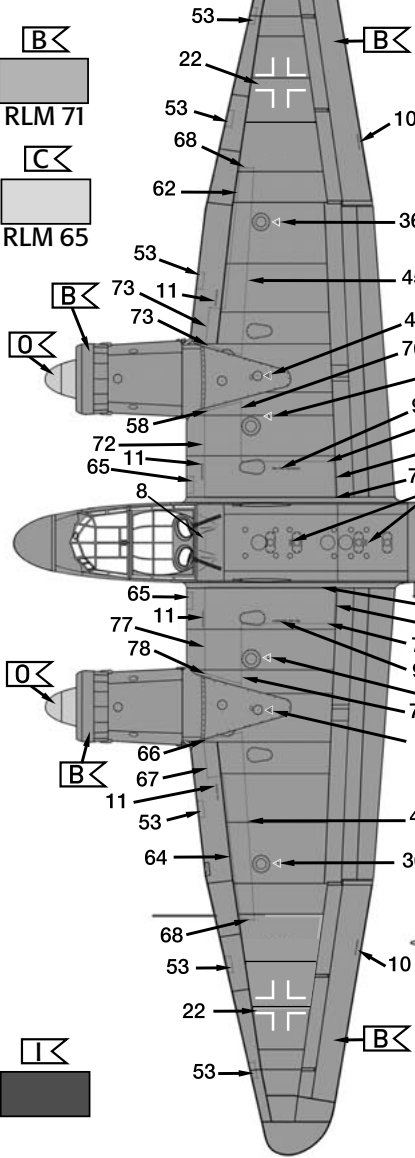
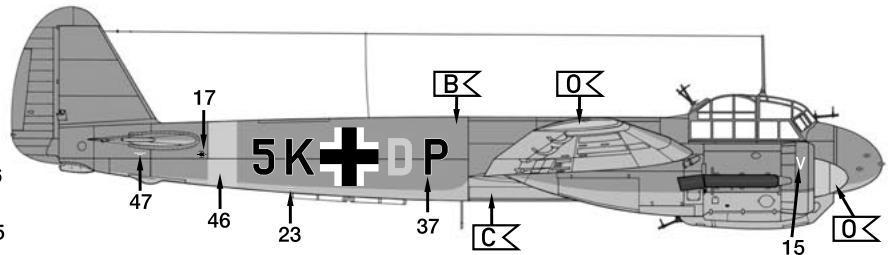
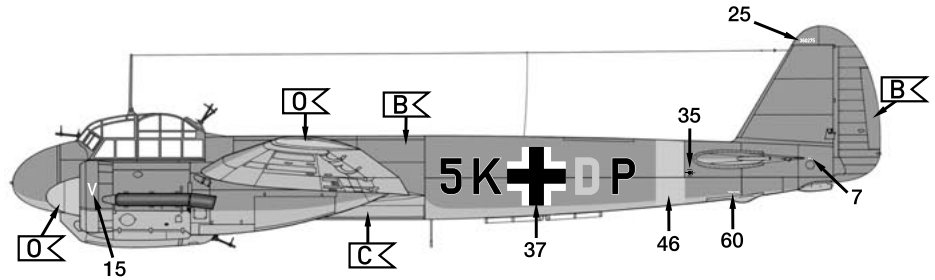
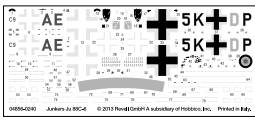
Detail on Engine - Both Side -



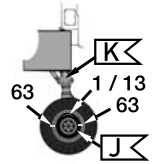
61



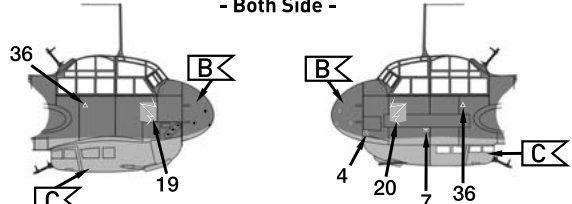
Junkers Ju 88C-6 of 6./ KG(Z) 3 „Blitzgeschwader“ Poltawa, Soviet Union; April 1943



Detail on Main Gear - Both Side -



Detail on Front Fuselage - Both Side -



Detail on Engine - Both Side -

