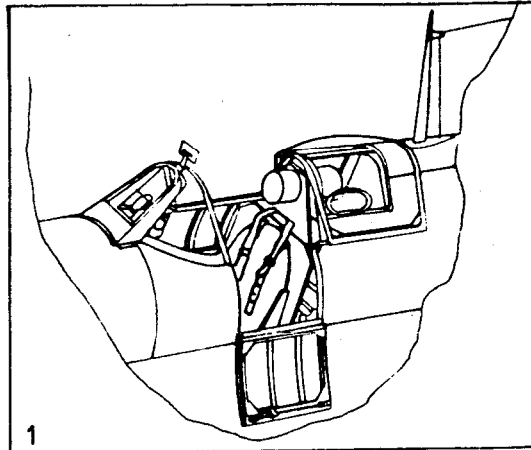


FALCON Clear-Vax



1/72 SCALE CANOPY SET NO. 2 - R.A.F. FIGHTERS WORLD WAR II



N.B. As the use of this product is beyond the control of the seller it is sold with no warranty, statutory or otherwise, whatsoever.

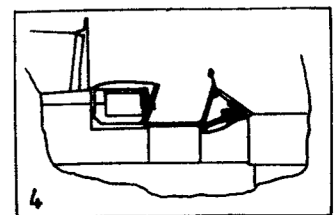
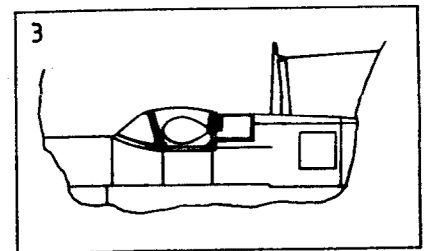
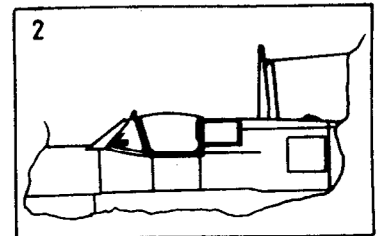
Made in New Zealand



ASSEMBLY NOTES

Cut the desired canopy, complete with base, away from the rest of the sheet. To separate the canopy from the base, carefully score around the edges with a very sharp modelling knife or scalpel. Any rough edges can be cleaned up with fine grade wet and dry sandpaper. The canopy is best attached to the model with PVA or white glue. Cyanoacrylate glue can also be used but must be used sparingly as large amounts tend to cause frosting on the clear areas. The best way to achieve crisp frame lines is by attaching pre-painted strips of decal film where required. It will be necessary to undercoat the frame lines marked on the canopy as decals need a painted surface for best adhesion.

1. Spitfire Mk.I/II: Suggested kit - Airfix Mk.I. The drawing shows the canopy slid back and entry door open.
2. Spitfire Mk.V: Suggested Kit - Airfix Mk.V: This canopy is split into 3 sections and is best fitted in the open position.
3. Spitfire P.R.Mk.IV: Suggested kit - Airfix Mk.I or V. Some kitset modifications will be needed to build this version, including the deeper chin fairing, camera installation and removal of all guns.
4. Spitfire Mk.V (late)/VI/VII/VIII/IX/XII/XIV/21: Two canopies are provided for this, the main production Spitfire canopy. Most kits will need filling at the lower windshield line in order to fit neatly.
5. Spitfire Mk.16/18/22/24: All late model Spitfires and some Seafires used this canopy. Suggested references for Spitfires: *Aeroguide Classics No. 1 (Mk.V)*, *The Spitfire Story*, *Scale Models - Aircraft of the Battle of Britain*, *Spitfire - Classic Aircraft and how to model them (PSL)*, *Spitfire in action No. 39 (Squadron/Signal)*.
6. Westland/Whirlwind Mk.1: Suggested kit-Airfix. The sideview shows the canopy in the open position. Suggested reference - *Scale Models*, December 1978.
7. Typhoon/Tempest "Bubble" canopy: Suggested kits - Airfix Typhoon, Frog Typhoon and Tempest, Heller Tempest, Matchbox Tempest. The drawing shows the canopy in open position.



Some kits will need modifications at the windshield/fuselage join. Suggested references: *Typhoon and Tempest at War* (Ian Allan), *Scale Models* November 1975 (1/72 Typhoon plans), *Scale Models* February 1973 (1/72 Tempest plans).

8. Boulton Paul Defiant: Suggested kit - Airfix. The sideview shows the turret fairings in lowered position. For true accuracy the basic kit will need some drastic modifications. Suggested references: Air Classics - May 1971, Scale Models - June 1980 (1/72 plans).
9. Typhoon "Car Door" Canopy: Suggested kit - Airfix. In order to locate the canopy, place the Right Fuselage Half on the drawing provided, and trim the forward area to match the plan. Separate doors are provided for display in the open position.
10. D.H. Mosquito : Suggested kit - Airfix F.B. Mk.VI. This canopy was fitted to most fighter variants of the Mosquito. Note position of windshield wiper. Suggested reference - Mosquito at War (Ian Allan).
11. Hawker Hurricane: Suggested Kits - Airfix Mk.I, Heller Mk.IIC. The drawing shows the canopy in open position. Suggested references: Scale models - Aircraft of the Battle of Britain, Scale Models - October 1980. Hurricane at War (Ian Allan).
12. Bristol Beaufighter: Suggested kits - Matchbox Mk.X, Frog Mk.21. The drawing shows the pilot's hatch open. Note that the rear canopy opens at the arrowed frameline. Alternative main canopies are provided for the matchbox and Frog Kits. Alternative rear canopies are also provided. Suggested references Beaufighter at War (Ian Allan). Scale Models - May/July 1974.

Produced by
FALCON INDUSTRIES
 P.O. BOX 42-093
 WELLINGTON
 NEW ZEALAND

Falcon Industries is an
 associate member of
 I.P.M.S. New Zealand

